

MANAGED SWITCH

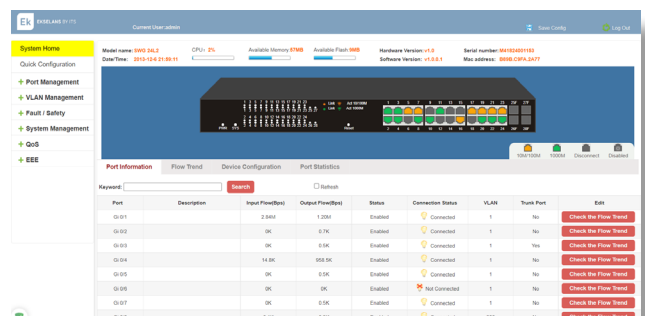
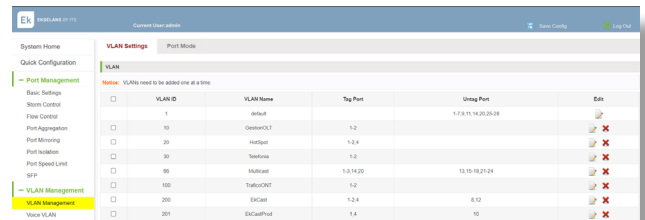
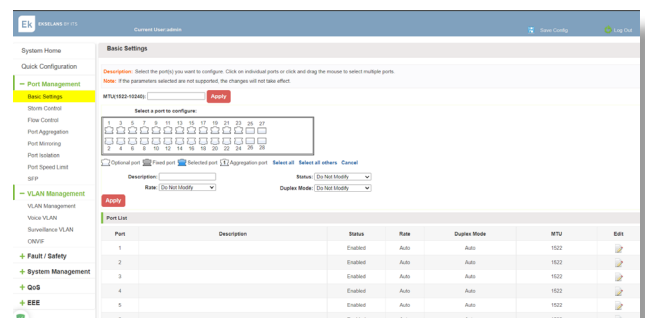
SWG 24 L2



- ✓ 24 Port 10/100/1000Mbps + 4 SFP port
- ✓ Layer 2+ funtion for an efficient routing
- ✓ Standard IEEE802.3, 802.3u, 802.3ab, 802.3x.
- ✓ VLAN management, IGMP snooping, MACs admin, port mirroring.....
- ✓ Web management interface, SSH, TELNET, SNMP.
- ✓ 1U / Rack 19"
- ✓ Multi-cast facilities (compnies, hotels, hospitals, SoHo...)
- ✓ Suitable product to include in GPON by EK, EK CAST, EK HOTEL or WiFi by EK installations



SWG 24 L2





TECHNICAL INFORMATION

REFERENCE		SWG 24 L2
Code		334200
Ports	Mbps	24 x 10/100/1000
Port functions		IEEE 802.3 para Ethernet IEEE 802.3u para Fast Ethernet IEEE 802.3u por IEEE 802.3ab GB Ethernet MDI/MDIX automático El control de flujo IEEE 802.3x admite el modo dúplex completo Admite operación de dúplex medio/completo (la mitad a 10/100 Mbps, completo a 1000 Mbps)
Switching Capacity	Gbps	56
Max Forwarding Rate	Mpps	41,66
MAC Address Table size		8K
Packet buffer	MB	4
Flash Memory	MB	16
Standby Mode	W	6,143
Maximum Power Consumption	W	16,34
Power input		Fuente de alimentación interna de 100 a 240 V CA, 50 a 60 Hz
MTBF		415,670 h
VLAN		Port-based VLAN 802.1Q tagged VLAN Auto Surveillance VLAN Voice VLAN Management VLAN Max. 4094 VLAN
L2 Features		- Control de flujo IGMP Snooping V1/V2/V3 / Admite 256 grupos MLD snooping Link aggregation - Loopback detection - LLDP Spanning tree 802.1D STP / 802.1w RSTP / 802.1s MSTP QOS Port mirroring
Security		DDOS ACL
Management		WEB, SSH, TELNET, SNMP.
Heat dissipation		55.77 BTU/h
Ventilation		Sin ventilador
Operating temperature	°C	0 - 50
Humidity	%	10 - 90 (sin condensación)
Max dissipation	BTU/h	7,03
Dimensions	mm	440 x 280 x 44
Weight	Kg	2,295