

INSTALLATION & CONFIGURATION MANUAL

HD-1000DM / HD-2000DM / HD-4000

(DVB-T HD Series)

Single / Dual / Quad Input

Encoders / Modulators



FENGER®

TABLE OF CONTENTS

SAFETY PRECAUTIONS	3
PACKAGE CONTENTS	4
PRODUCT DESCRIPTION	4
SPECIFICATIONS	5
INSTALLATION	6
UNPACKING and INSPECTION	6
PRODUCT PICTURES and DIAGRAMS	6
HD-1000DM	6
HD-2000DM	6
HD-4000	6
HARDWARE INSTALLATION and CONNECTIONS	7
MODULATOR SETUP AND CONFIGURATION	9
INITIAL SETUP TO FACTORY DEFAULT	9
MODULATOR CONFIGURATION	9
Procedure to connect to the Encoder via the remote setup port	13
Procedure to connect to the Encoder for remote access and monitoring	18
UPnP Help Section for Windows	20
HD MODULATOR NOTES	23
DECLARATION OF CONFORMITY	23

SAFETY PRECAUTIONS



The presence of this symbol is to alert the installer and user to the presence of uninsulated dangerous voltages within the product's enclosure that may be of sufficient magnitude to produce a risk of electric shock.

TO REDUCE THE RISK OF FIRE OR ELECTRIC SHOCK, DO NOT EXPOSE THIS DEVICE TO RAIN OR MOISTURE. DO NOT OPEN THE UNIT. REFER SERVICING TO QUALIFIED PERSONNEL ONLY.

- ❖ DO NOT apply power to the unit until all connections have been made, all components have been installed and all wiring has been properly terminated.
- ❖ DO NOT terminate, change or uninstall any wiring without first disconnecting the unit's power cord from the AC outlet.
- ❖ DO NOT connect the power cord to the device if the power cord is damaged.
- ❖ DO NOT cut the power cord.
- ❖ DO NOT plug the power cord into an AC outlet until all cables and connections to the device have been properly connected.
- ❖ The device should be installed in an environment consistent with its operating temperature specifications. Placement next to heating devices and ducts is to be avoided as doing so may cause damage. The device should not be placed in areas of high humidity.
- ❖ DO NOT cover any of the device's ventilation openings.
- ❖ DO NOT cover or obstruct the device's fan or fan openings.
- ❖ If the device has been in a cold environment allow it to warm to room temperature for at least 2 hours before connecting to an AC outlet.

PACKAGE CONTENTS

This package contains:

1. One HD-1000DM, or HD-2000DM, or HD-4000 Encoder / Modulator
2. One power cable
3. One Installation & Configuration Manual

Inspect the package before starting installation to ensure there is no damage and all supplied contents are present. Contact your distributor or dealer should the device be damaged or package contents are incomplete.

PRODUCT DESCRIPTION

FENGER's HD-1000DM, HD-2000DM, and HD-4000 encoder / modulator convert Digital Video Broadcasting (DVB-T) Standard and High Definition Video and Audio signals to a COFDM RF output. The HD-1000DM, HD-2000DM, HD-4000 offer a single, dual or quad intelligent input. All units feature programmable channel, network names and logic channel numbering (LCN). The unit's front-mounted LCD display and controller allows for easy configuration and adjustments. Units are designed to be rack mounted in a standard EIA 19" 1RU rack.

The HD-1000DM, HD-2000DM, and HD-4000 are perfect for multi-video distribution solutions in the commercial and institutional market (hotels, motels, sports bars, restaurants, hospitals, casinos, business and university campuses, etc.) as well as home entertainment systems.

SPECIFICATIONS

DVB-T	HD-1000DM	HD-2000DM	HD-4000
INPUT	1-input	2-input	4-input
Input Connectors	HDMI input (Video + Audio)		
	YPbPr component input (Video)		
	Composite input (Video)		
	Left and Right channel Audio input (Audio)		
	Coaxial SPDIF input (Digital Audio, LPCM), AC-3 Pass through		
	Optical SPDIF input (Digital Audio, LPCM), AC-3 Pass through		
Video Input Level	0.7 - 1.4V (Peak-to-Peak)		
Audio Input	Stereo / Digital		
Audio Input Level	0.4 - 4.8V (Peak-to-Peak)		
Input Impedance	75 Ohm		
OUTPUT			
Standard	DVB-T according to EN 300 744		
Frequency Range	E2 (50.5MHz) ~ S20 (296.5MHz) with 7 MHz interval S21 (306MHz) ~ E69 (858MHz) with 8 MHz interval		
Channel Bandwidth	7 MHz, 8 MHz		
MER	33 dB typical, 32 dB minimum		
Output Level	95 dBuV typical		
Output Level Adjustment	Maximum power output		
Output Impedance	75 Ohm		
Output Connector	"F" female		
MODULATION			
Video Resolution	1080i/720p/576p/576i/480p/480i for both MPEG-2 and MPEG-4 AVC, 1080p for MPEG-4 AVC only		
Video Compression	MPEG-2, MP@HL / MPEG-4 AVC, MP@Level4		MPEG-4 AVC, MP@Level4
Audio Compression	MPEG-1 Layer II / AAC, AC3 Pass through		
LCN	Yes		
Carrier (OFDM Mode)	2K, 8K		
Guard Intervals	1/32		
Code Rate (FEC)	7/8		
Constellations	64 QAM		
GENERAL			
Power Supply	100 to 240 VAC, 50/60 Hz		
Consumption	15.6 Watts	20.4 Watts	26.4 Watts
Temperature Rating	0°C to +45°C		
Dimensions	482.7mm x 240mm x 44.4mm		
Weight	3.10 Kilograms	3.20 Kilograms	3.40 Kilograms

**Specifications subject to change without prior notice*

INSTALLATION



System Installer must adhere to Article 820-40 of the NEC that provides guidelines for proper grounding and specifies that the cable ground shall be connected to the grounding system of the building, as close to the point of cable entry as possible.

UNPACKING and INSPECTION

Each unit is shipped factory tested. Ensure all items are removed from the container prior to discarding any packing material.

Thoroughly inspect the unit for shipping damage with particular attention to connectors and controls. If there is any sign of damage to the unit or damaged or loose connectors contact your distributor immediately. Do not put the equipment into service if there is any indication of defect or damage.

PRODUCT PICTURES and DIAGRAMS

HD-1000DM



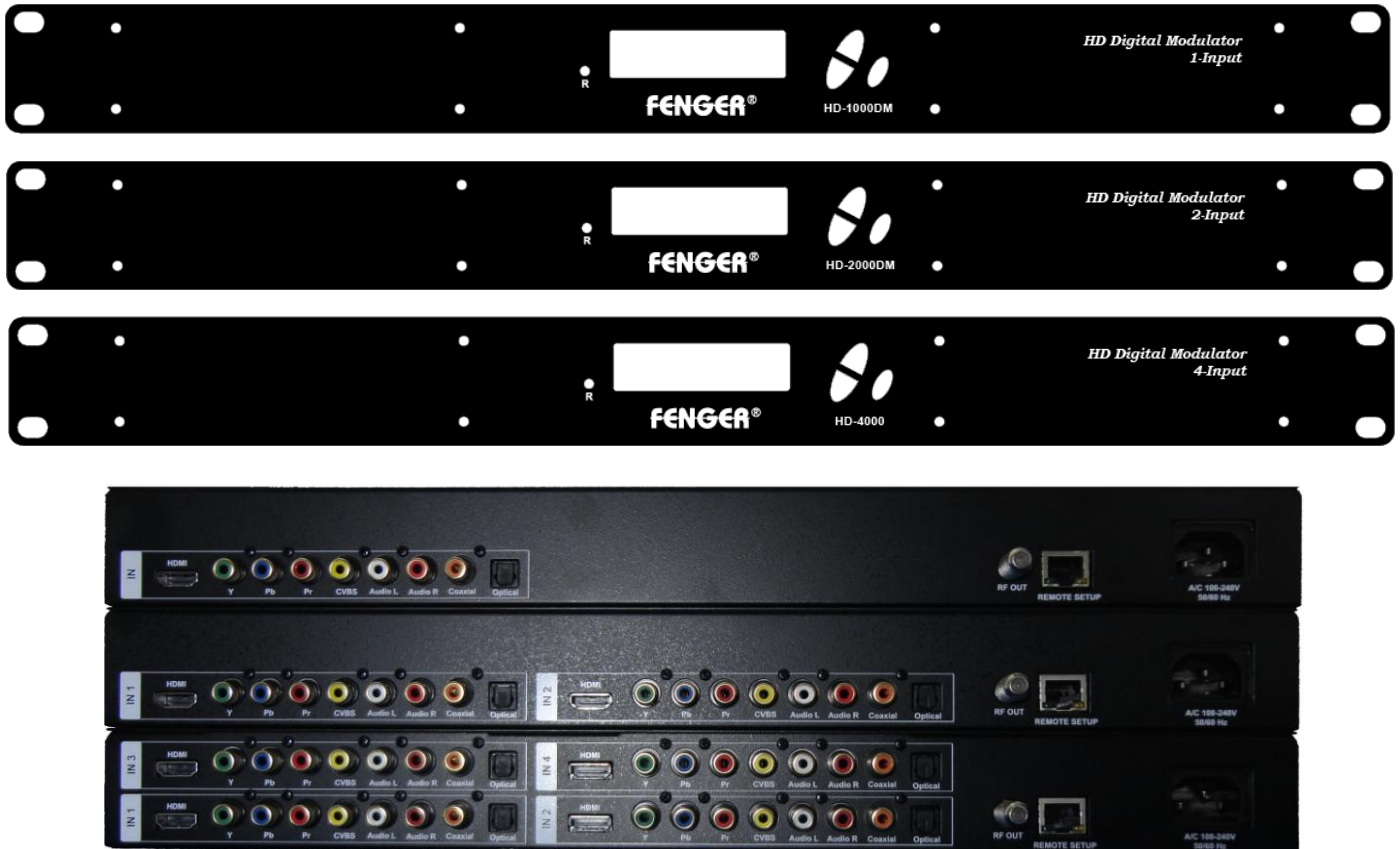
HD-2000DM



HD-4000



HARDWARE INSTALLATION and CONNECTIONS



1. The unit is designed to be rack mounted in a standard EIA 19" rack.
2. The unit comes standard with HDMI, Component, and Composite video inputs.

The HD encoder / modulators are intelligently designed to detect the active video input from the video source. **HDMI Connection:** Connect the HDMI cable(s) from the video source(s) into the HDMI input(s) on unit. If using a **Component Video Cable**, connect the Y (Green), Pb (Blue), and Pr (Red) video source cable to the unit's Component input ports. If using a **Composite Video** source, use a 75Ω coaxial cable with RCA connectors to connect the **video source** (e.g., CATV, DVD, VCR, Camera) to the unit's **yellow RCA VIDEO INPUT (CVBS port) jack** (IN1...IN2 depending on the HD model).

Repeat this step for each video source connection.

It is highly recommended that quality coaxial cable and connectors be used for all video/audio source connections.

3. **Component / Composite Audio inputs:** Connect a **Digital Audio Coaxial** cable or **Optical (Toslink)** cable for Digital Audio use from the audio source. For A/V audio input (Left / Right Audio) use RCA cables to connect the **audio source** to the red / white **AUDIO L and AUDIO R INPUT jacks** (IN1...IN2 depending on the HD model). Use the red and white jacks for audio input or either one for a single input.

Repeat this step for each audio source connection.

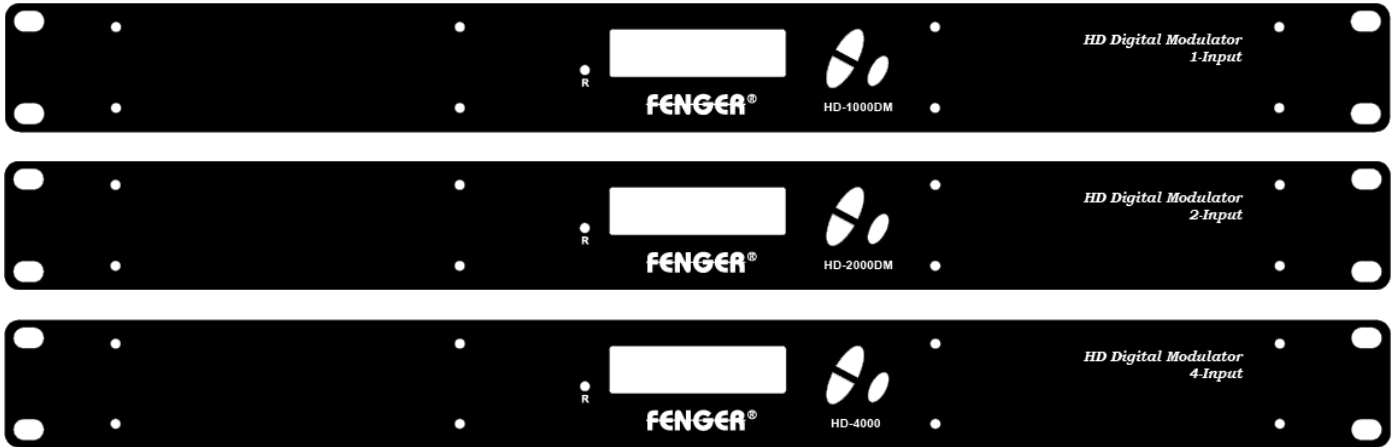
Be sure the video and audio connections for each source are consistent with the unit's inputs (IN1...IN2 depending on the HD model).

4. Use a quality 75Ω coaxial cable with “F” connectors from the unit's **RF OUT jack** to the **distribution system** (combiner or reverse splitter) or directly to a television.
5. Connect the included power cord to the unit's **POWER** plug.
6. Connect the power cord to an appropriately rated AC power outlet.



MODULATOR SETUP AND CONFIGURATION

INITIAL SETUP TO FACTORY DEFAULT



The HD-1000DM/2000DM/4000's front panel is used to configure the modulator as desired.

MODULATOR CONFIGURATION

Once the modulator is powered up it will go through an internal booting process. When “**Running**” appears in the LCD Display the unit is ready for programming or operation.

- ❖ **Password** – Press the OK button to enter the password **0000**. Use the **Scroll Up/Down button** **set the password**. The default password is 0000. Press the OK button for each number to enter the password.

***** NOTICE TO THE INSTALLER- SEVERAL INTERNAL FUNCTIONS ARE RESERVED OR SET FOR FUTURE USE. SKIP OVER THESE ‘RESERVE’ MENUS WHEN SETTING UP THE ENCODER FOR YOUR APPLICATION.**

- ❖ **Advanced Menu** – To access the Advanced Menu first enter the password by pressing the OK button. Once the correct password is entered press the OK button and the LCD Screen will display “Advanced Menu Output Channel”. The following configuration options are available under Advanced Menu:
 - **Output Channel** – Use the Scroll Up/Down button to change the output channel. Channels **2 to 69** are available. Once the desired output channel is selected press the OK button to set the channel.
 - **Attenuation** – Use the Scroll Up/Down button to select Attenuation. Press the OK button to enter the Attenuation menu. The modulator is set for **Maximum Power Output only**.
 - **Constellation** – Use the Scroll Up/Down button to select Constellation. Press the OK button to enter the Constellation menu. The modulator is set for **QAM64 only**. Press the OK button to set.

- **FEC** – Use the Scroll Up/Down button to select FEC. Press the OK button to enter the FEC menu. The modulator is set for **7/8 only**. Press the OK button to set.
- **GUARD INTERVAL** – Use the Scroll Up/Down button to select GUARD INTERVAL. Press the OK button to enter the GUARD INTERVAL menu. The GUARD INTERVAL is set for **1/32 only**. Press the OK button to set.
- **OFDM MODE** – Use the Scroll Up/Down button to select OFDM MODE. Press the OK button to enter the OFDM MODE menu. Menu options are 2K, 8K. The factory default is **8K**. Use the Scroll Up/Down button to select the desired OFDM MODE and press the OK button to set.
- **RF Output** – Use the Scroll Up/Down button to select RF Output. Press the OK button to enter the RF Output menu. Menu options are Normal, Inverted and C.W. The factory default is **Normal**. Use the Scroll Up/Down button to select the desired RF Output and press the OK button to set.
- **Brightness** – Use the Scroll Up/Down button to select Brightness. Press the OK button to enter the Brightness menu. Use the Scroll Up/Down button to select the desired Brightness value (0 to 255) and press the OK button to set. Factory default is **128**
- **Contrast** – Use the Scroll Up/Down button to select Contrast. Press the OK button to enter the Contrast menu. Use the Scroll Up/Down button to select the desired Contrast value (0 to 255) and press the OK button to set. Factory default is **128**.
- **Saturation** – Use the Scroll Up/Down button to select Saturation. Press the OK button to enter the Saturation menu. Use the Scroll Up/Down button to select the desired Saturation value (0 to 255) and press the OK button to set. Factory default is **128**.
- **Hue** – Use the Scroll Up/Down button to select Hue. Press the OK button to enter the Hue menu. Use the Scroll Up/Down button to select the desired Hue value (0 to 255) and press the OK button to set. Factory default is **128**.
- **Device Address** – Use the Scroll Up/Down button to select Device Address. Press the OK button to enter the Device Address menu. Use the Scroll Up/Down to select the Desired Address ranging from 1 to 255, then press the OK button to set. Factory default is **1**.

Setting the Device address to 0 will clear and reset any Network Parameters (Host Name, Revert to DHCP, IP Address, and MAC address) back to factory default setting.

All previous settings will be lost if 0 is selected.

- **CELL ID** – Use the Scroll Up/Down button to select CELL ID. Press the OK button to enter the CELL ID menu. Use the Scroll Up/Down button to select the desired CELL ID ranging from 0 to 65535 then press the OK button to set. Factory default is **0**.
- **Stream ID** – Use the Scroll Up/Down button to select Stream ID. Press the OK button to enter the Stream ID menu. Use the Scroll Up/Down button to select the desired Stream ID ranging from 0 to 65535 then press the OK button to set. Factory default is **4109**.
- **Network ID** – Use the Scroll Up/Down button to select Network ID. Press the OK button to enter the Network ID menu. Use the Scroll Up/Down button to select the desired Network ID ranging from 0 to 65535 then press the OK button to set. Factory default is **12289**.
- **ORG Network ID** – Use the Scroll Up/Down button to select ORG Network ID. Press the OK button to enter the ORG Network ID menu. Use the Scroll Up/Down button to select the desired ID ranging from 0 to 65535 then press the OK button to set. Factory default is **170**.

- **Network Name** – Use the Scroll Up/Down button to select Network Name. Press the OK button to enter the Network Name menu. Use the Scroll Up/Down button to select the first character for the desired Network Name then press the OK button to set. Repeat the process for each character in the desired Network Name. A Network Name can consist up to 16 characters.

- **Default Configuration** –



Caution: Once the OK button is pressed at the Default Config menu the unit will automatically reset to the factory default settings. All settings or changes to the encoder/modulator will be lost.

If you wish to set the modulator back to the factory default settings use the Scroll Up/Down button to reach Default Configuration then press the OK button.

- **LCN Mode** – Use the Scroll Up/Down button to select LCN Mode. Press the OK button to enter the LCN Mode menu. Use the Scroll Up/Down button to select the desired LCN Mode. Options are: APN, EACEM, ITC, NorDig. Factory Default is **ITC**. Select the desired LCN Mode then press the OK button to set.
- **1 Video Input** – Use the Scroll Up/Down button to change the Video Input Selection. Select: HDMI, Component, Composite, ASI, or Auto. Once the desired Video Input is selected press the OK button to set the Video Input Selection. Factory Default is **Auto**. If the modulator has more than one video input scroll through the Advanced Menu for the additional Video Input menus.

*****ASI input may not be available on your specific model.***

- **1 Program Num** – Use the Scroll Up/Down button to select 1 Program Num. Press the OK button to enter the 1 Program Num menu. Use the Scroll Up/Down button to select the desired 1 Program Num option ranging from 0 to 65535 then press the OK button to set. Factory default is **4173**. If the modulator has more than one video input scroll through the Advanced Menu for the additional Program Num menus.
- **1 Channel Name** – Use the Scroll Up/Down button to select the Channel Name. Press the OK button to enter the Channel Name menu. Use the Scroll Up/Down menu to select the first character of the desired Channel Name then press the OK button to set. Repeat the process until the Channel Name is completed. If the modulator has more than one video input scroll through the Advanced Menu for additional Channel name menus.
- **1 Provider Name** – Use the Scroll Up/Down button to select the Provider Name. Press the OK button to enter the Provider Name menu. Use the Scroll Up/Down menu to select the first character of the desired Provider Name then press the OK button to set. Repeat the process until the Provider Name is completed. If the modulator has more than one video input scroll through the Advanced Menu for additional Provider Name menus.
- **1 LCN** – Use the Scroll Up/Down button to select 1 LCN. Press the OK button to enter the 1 LCN menu. Use the Scroll Up/Down button to select the desired LCN value then press the OK button to set. The 1 LCN value range is from 1 to 999. If the modulator has more than one video input scroll through the Advanced Menu for additional LCN menus. Factory default is **23**.
- **1 Aspect Ratio** – Use the Scroll Up/Down button to select Aspect Ratio. Press the OK button to enter the Aspect Ratio menu. Use the Scroll Up/Down button to select the desired Aspect Ratio option of 4:3 or 16:9 then press the OK button to set. Factory default is **16:9**.

If the modulator has more than one video input scroll through the Advanced Menu for additional Aspect Ratio menus.

- **1 Video Output** – Use the Scroll Up/Down button to select Video Output Format. Press the OK button to enter the Video Output Format menu. Use the Scroll Up/Down button to select the desired Video Output Format: MPEG2 or MPEG4/AVC then press the OK button to set. Factory default is **MPEG2** for HD-1000DM/HD-2000DM, **MPEG4 AVC** for HD-4000.
- **1 HDCP** – Use the Scroll Up/Down button to select HDCP. Press the OK button to enter the HDCP menu. Use the Scroll Up/Down button to select the proper control: Enable or Disable. The Factory default is **Enable**. If the modulator has more than one video input scroll through the Advanced Menu for additional HDCP menus.
- **1 Audio Input** – Use the Scroll Up/Down button to select. Press the OK button to enter the Audio Input menu. Use the Scroll Up/Down button to select the Audio Input option: Analog, Coaxial, Optical. The factory default is **Analog**. Press the OK button to set. If the modulator has more than one Audio Input scroll through the Advanced Menu for the additional Audio Input menus.
- **1 Audio Output** – Use the Scroll Up/Down button to select Audio Output. Press the OK button to enter the Audio Output menu. Use the Scroll Up/Down button to select the Audio Output option: MP2 (MPEG1 Layer II), AAC, AC-3 Pass Through. The factory default is **MP2**. Press the OK button to set. If the modulator has more than one Audio output scroll through the Advanced Menu for the additional Audio Output menus.
- **1 Closed Caption** – Use the Scroll Up/Down button to 1 Closed Caption. Press the OK button to enter the 1 Closed Caption menu. Enable/Disable 1 Closed Caption control. Factory default is **Disable**. If the modulator has more than one Video Output scroll through the Advanced Menu for the additional Closed Caption menus.

NOTE: WHEN USING CLOSED CAPTIONING- USER MUST CONNECT FROM THE CONTENT SOURCE THE COMPOSITE OUTPUT OR CC OUTPUT SOURCE TO THE ENCODER'S CVBS INPUT CONNECTOR

- ❖ To **exit the Advanced Menu** use the Scroll Up/Down button to select Exit then press the OK button. Exit, Exit Menu will appear on the LCD screen. Press the OK button twice to exit.

***** IMPORTANT – SAVE THE SETTINGS *****

- ❖ Once the settings are made and the modulator is programmed (a) remove power from the unit by disconnecting the power cable (b) wait 5 seconds and (c) reconnect the power cable to the unit. This will allow the modulator to capture the new settings.

INSTALLING MULTIPLE HD MODULATORS IN AN INSTALLATION

Please ensure each HD Modulator has different settings in the categories below if you are installing 2 or more in an installation.

OUTPUT CHANNEL | STREAM ID | CHANNEL NAME | LCN

NOTE: Failure to change the above settings will result in conflict and will not install all channels correctly.

Procedure to connect to the Encoder via the remote setup port

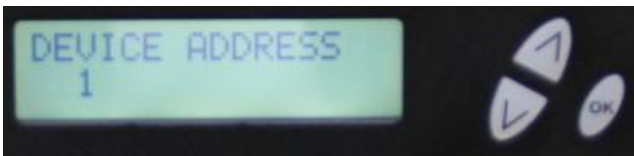
The following procedure will allow the installer to setup the Encoder via the GUI

(Intranet setup- closed LAN setup)

1. Power up the Encoder.
2. Press the OK button on the Front Panel.
3. Enter the Password 0000 to enter Advanced Menu Setup.
4. Scroll to the Device Address Menu.



5. Set a unique Device address for each encoder being installed in the system.



Device Address ranges from 1~255

Warning: Setting the “DEVICE ADDRESS” to 0 will clear the network setting to the Factory Default value.

6. Connect each encoder using a standard CAT5e cable from the Remote Setup port (located on the rear panel of the encoder) to a switch. Connect a CAT5e cable from the switch a PC.

NOTE: To connect to the encoder directly to a PC use a CAT5e Crossover cable.

7. Set the PC via the Control Panel to “Obtain an IP address automatically”

Start > Control Panel > View Network Status and Tasks



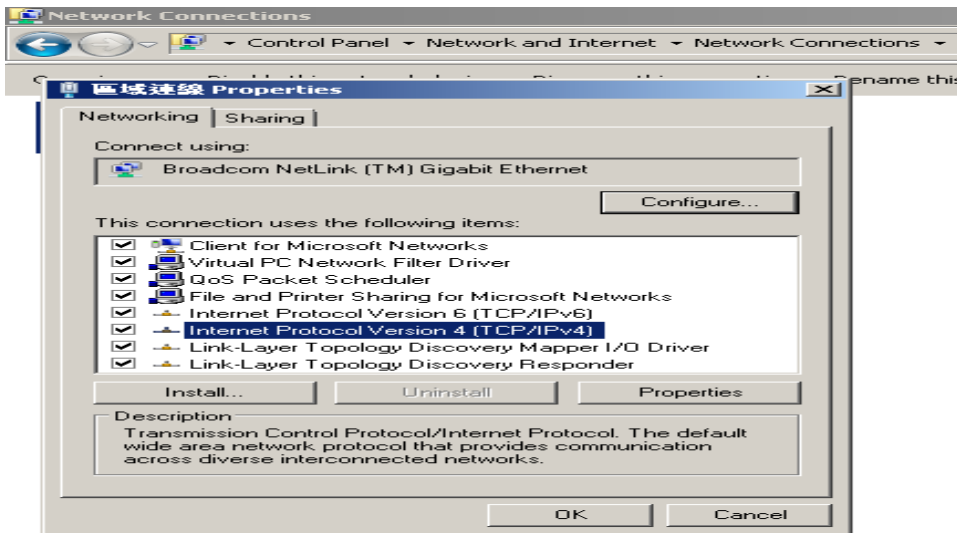
8. Select 'Change Adapter Settings' from the left plane



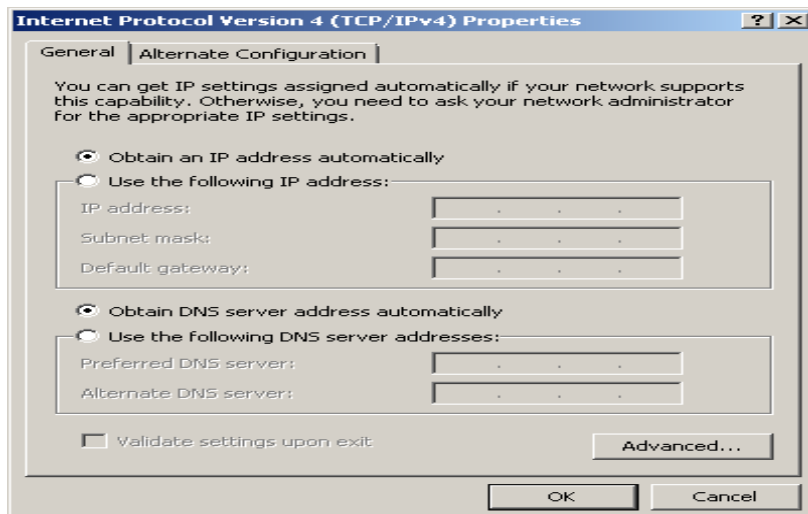
9. Select Local Area Connection Icon

Then Right Click – Select Properties

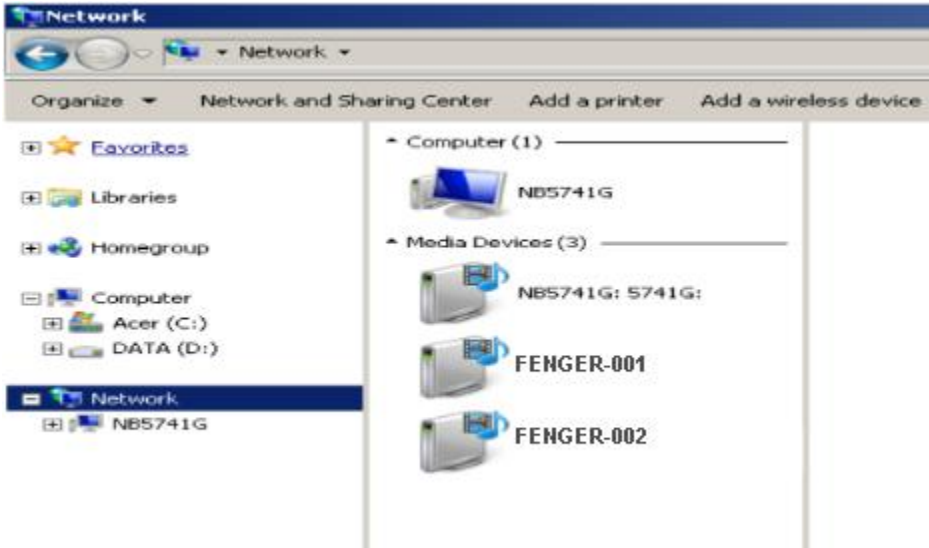
Internet Protocol Version 4 (TCP/IPv4) Properties



10. Select “Obtain an IP address automatically” & “Obtain DNS server address automatically”



11. After setting the PC to obtain IP address & Obtain DNS server automatically
Select Start > Computer > Network

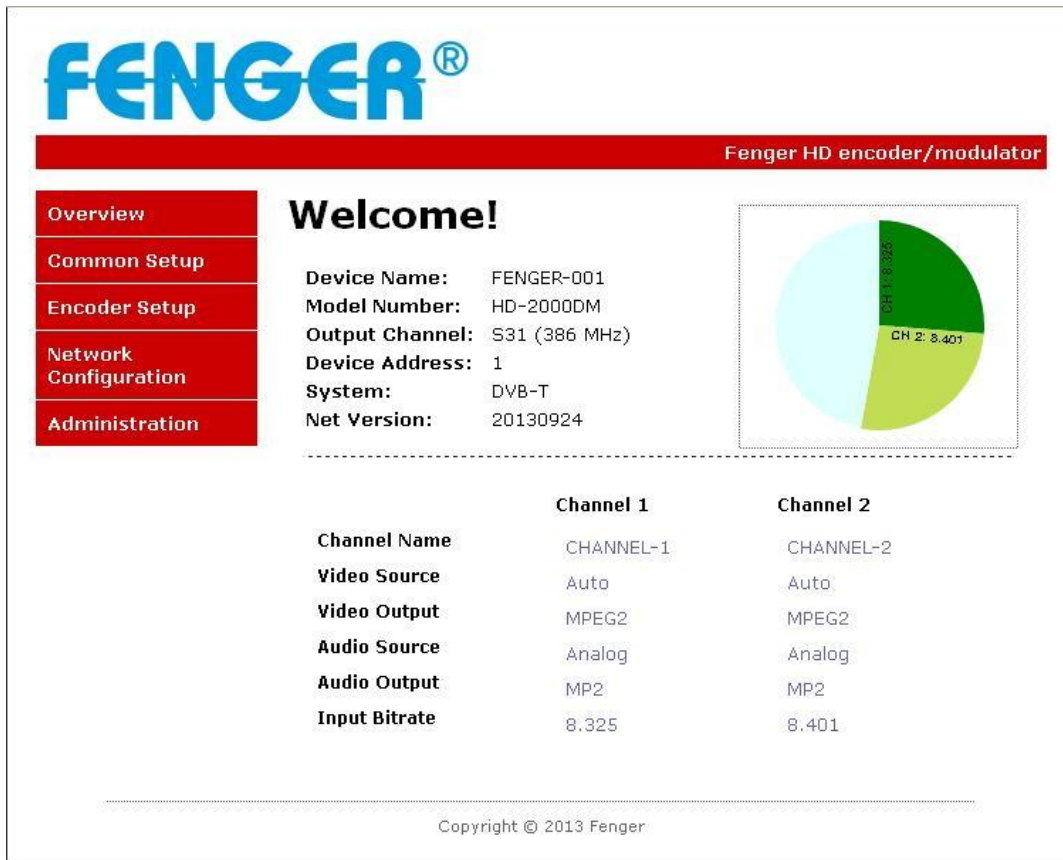


12. After selecting Network- the encoders will show up on the right side under Media Devices. Each device will show up by Device Address. (FENGER001, 002, 003...)

Right Click on the icon for the Encoder you want to setup. **Select 'View device webpage'**

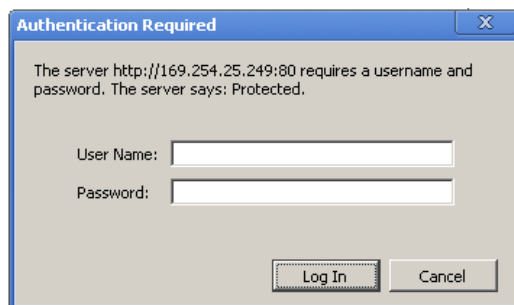


13. Welcome page will be displayed as shown



14. Select the Common Setup tab.

User will be presented with encoders '**Authentication Required**' screen.



15. Enter User Name and Password.

User Name: **admin**

Password: **Admin123**

16. **Change** settings of the encoder via the Common Setup, Encoder Setup, Network Configuration, and Administration Tabs.

17. **Select** Network Configuration Tab.

18. Confirm '**Enable DHCP**' check box is selected for closed in-house network.

(If using internet to connect to the Encoder see Internet setup procedure)

19. **Save all changes.** The user is required to do a local save if any changes are made on the Common / Encoder Setup tabs. Once all changes have been made and are complete- use the **Upload and Reboot function** to apply changes.

'Waiting for device rebooting' will appear as unit reboots and save the changes.

After the encoder recovers from rebooting- we recommend you save/ backup the configuration file for each encoder.

20. **Select** Administration Tab- then **Backup**. A **config.hex** file will be created. The file will be located in My Computer->C Directory->Documents and Settings->User->My Documents->Downloads->configs.hex

NOTE TO INTEGRATOR - WE HIGHLY RECOMMEND YOU RENAME THE CONFIG.HEX FILES FOR EACH ENCODER DEVICE

EXAMPLES: config_single_dev1_sitename.hex
config_dual_dev2_sitename.hex
config_quad_dev3_sitename.hex

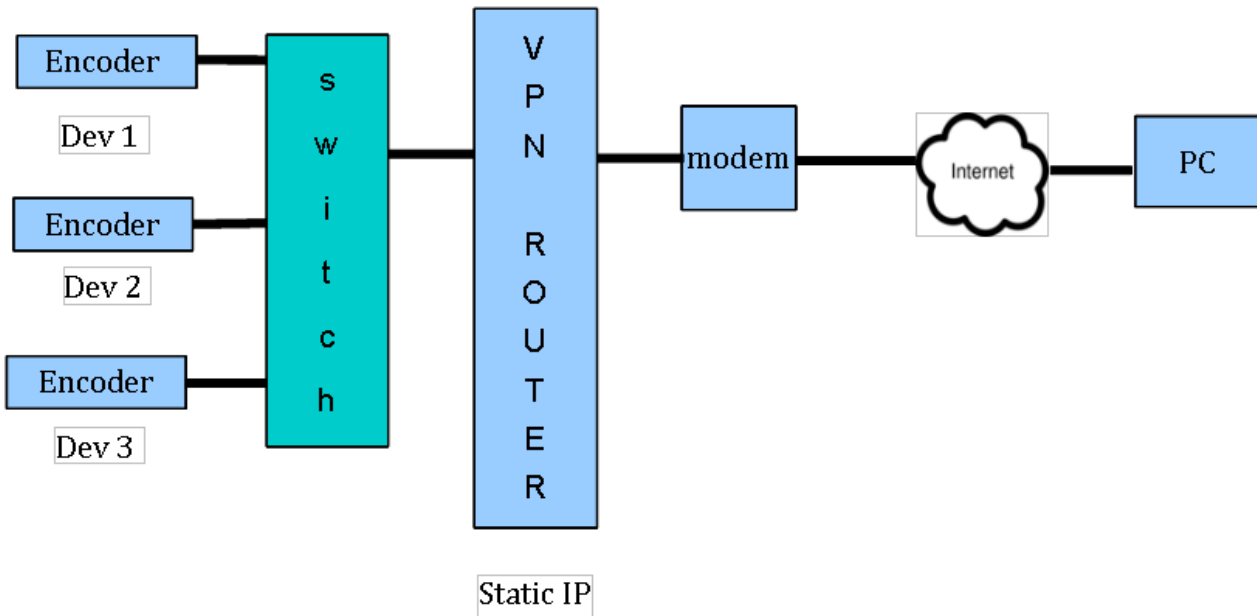
CONFIGURATION FILES FOR THE SINGLE, DUAL AND QUAD ENCODERS ARE DIFFERENT AND ARE NOT INTERCHANGEABLE.

Procedure to connect to the Encoder for remote access and monitoring

The following procedure will allow the integrator to access the encoder via the GUI for remote status monitoring and control.

Overview of Setup

Accessing the Encoders via the internet will require a VPN device with a Static IP



1. Using the instructions located in ***Procedure to connect to the Encoder via the remote setup port*** enter a unique Device Address for each encoder.
2. Setup each encoder's output channel and other parameters as required.
3. Select the Network Configuration Tab.
4. Deselect 'Enable DHCP'

MAC Address:	00:04:A3:00:01:10
Host Name:	Fenger000### Fenger000001
	<input type="checkbox"/> Enable DHCP
IP Address:	192.168.1.209
Subnet Mask:	255.255.255.0
Gateway:	192.168.1.254
	Save Config

5. Enter a unique Static IP address for each encoder.
6. Enter the Subnet Mask.
7. Enter the Gateway IP address from VPN device.
8. **Save** Configuration of Network settings by selecting Save Config button.
9. Connect the Ethernet switch to the VPN Device (Static IP Required) connected to the internet.

Contact your network administrator for the VPN device setup

10. Establish a VPN connection from a PC or laptop from an external internet connection.
11. Once the VPN tunnel has been established- Enter the Specific IP address of the Encoder you which to monitor in your internet browser (example: 192.168.100.10)
12. Save any changes made to the encoder and reboot encoder.

UPnP Help Section for Windows

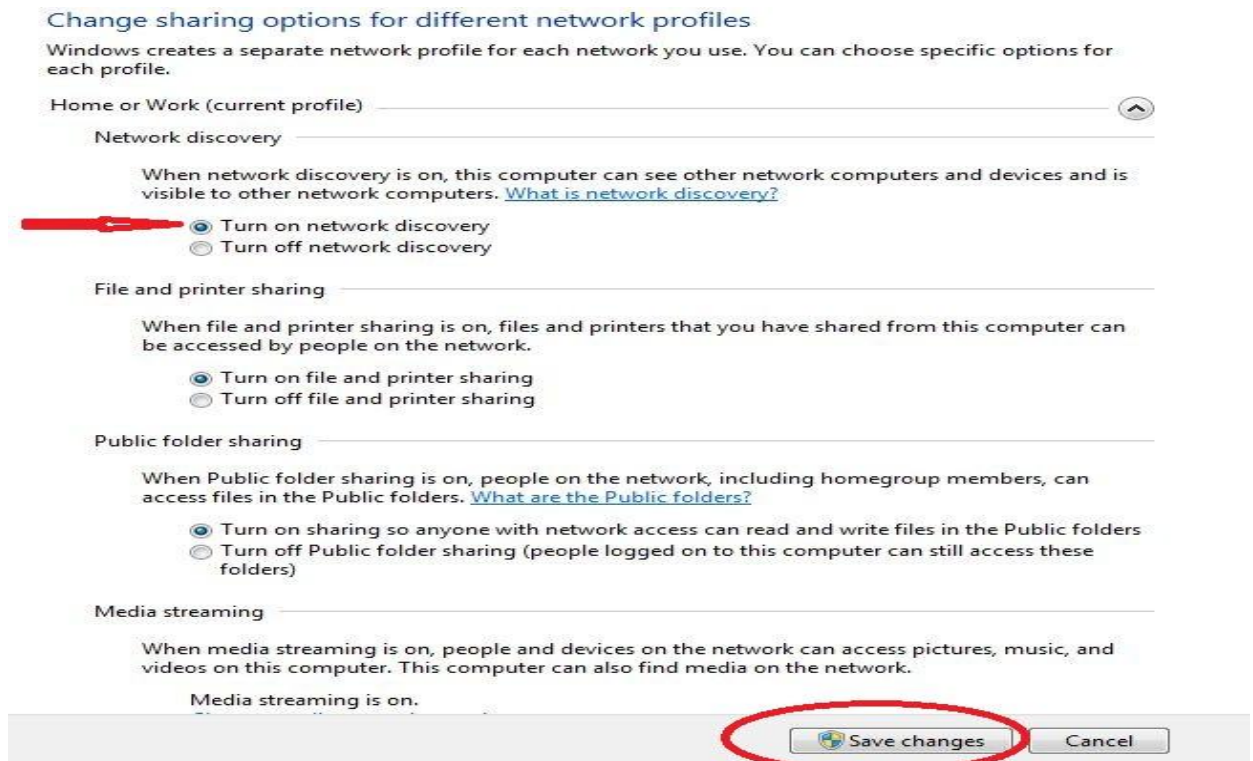
Windows 7:

Follow these steps to enable UPnP in **Windows 7**

1. **Control Panel-** Locate Icon for '**Network and Sharing Center**'
2. **Control Panel-** Locate Icon for '**Network and Sharing Center**'
3. Click '**Change Advanced sharing settings**' (located on the top left side)



4. Select '**Turn on network discovery**' located under **Network Discovery** section



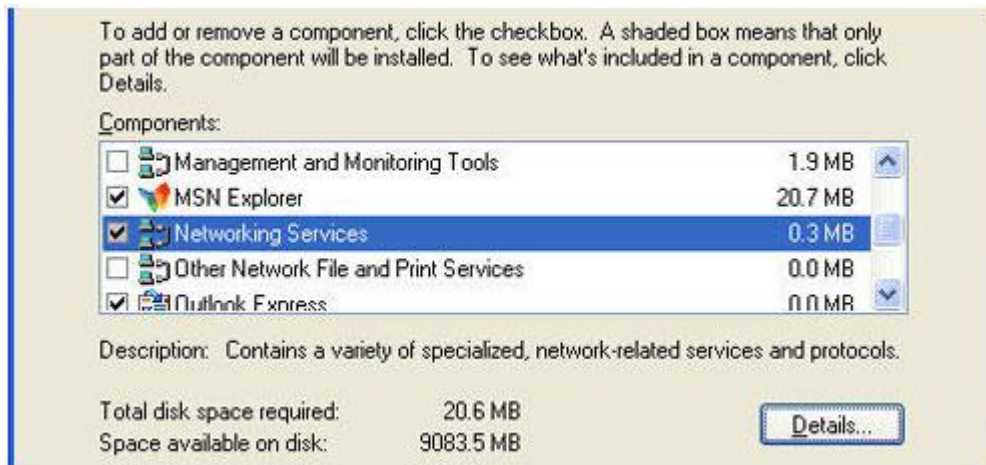
5. **Save Changes.**

For the UPnP architecture to work in Windows XP, the Internet gateway device must appear in Network Connections.

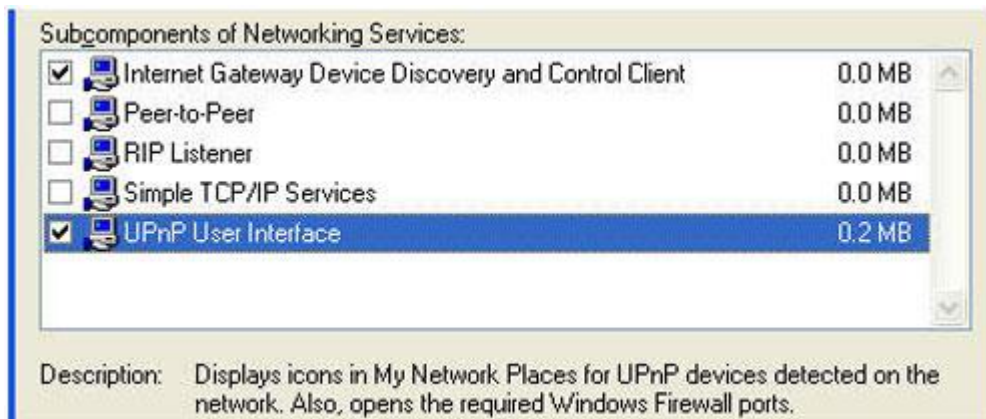
Windows XP:

Click **Start**, click **Run**, type **appwiz.cpl**, and then click **OK**.

1. Click **Add/Remove Windows Components**.
2. In the **Components** window, click **Networking Services**, and then click **Details**.

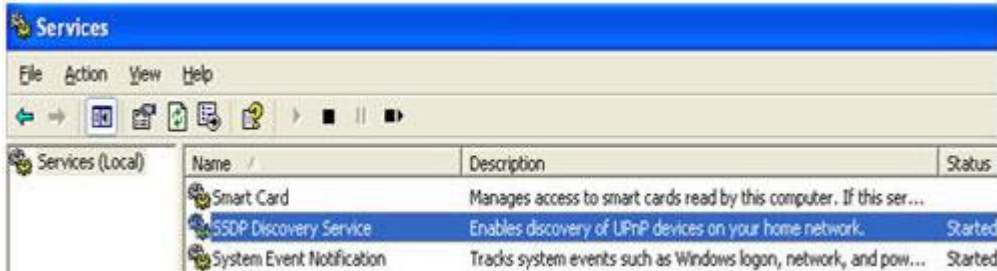


3. Click to select the **Internet Gateway Device** and **UPnP User Interface** check boxes in the **Subcomponents of Networking Services** window, if they are not selected.



4. Follow the instructions that appear on the screen to complete the installation. Or, if you did not make any changes, close the Add or Remove Programs windows and Control Panel.
5. Start the Services MMC snap-in. To do this, click **Start**, click **Run**, type **services.msc**, and then click **OK**.

6. Locate **SSDP Discovery Service** in the list of services.



7. If the status is not **Started**, double-click **SSDP Discovery Service** to open the **SSDP Discovery Service Properties** dialog box.
8. In the **Startup type** box, click **Automatic**, and then click **Start** under **Service status**. Then, close the **SSDP Discovery Services Properties** dialog box.

After you follow these steps, the SSDP Discovery Service is running and will automatically start when you start the computer.

Note: After you enable UPnP and start the SSDP Discovery Service, it may take 10 minutes for a router to be discovered and appear in Network Connections and in My Network Places.

HD MODULATOR NOTES

ITEM	VALUE
PASSWORD	
SERIAL NUMBER	
INSTALLATION DATE	
PURCHASE DATE	
VIDEO 1 INPUT	
VIDEO 2 INPUT	
VIDEO 3 INPUT	
VIDEO 4 INPUT	

DECLARATION OF CONFORMITY

FENGER® confirms that the products HD-1000DM, HD-2000DM and HD-4000 (HD Encoder/Modulator) conform to relevant EEC harmonized standards and consequently can carry CE-mark.

Relevant harmonized standards:

EN 55013:2001+A1:2003+A2:2006 Class B

EN 55020:2007+A11:2011

EN 60065:2002

