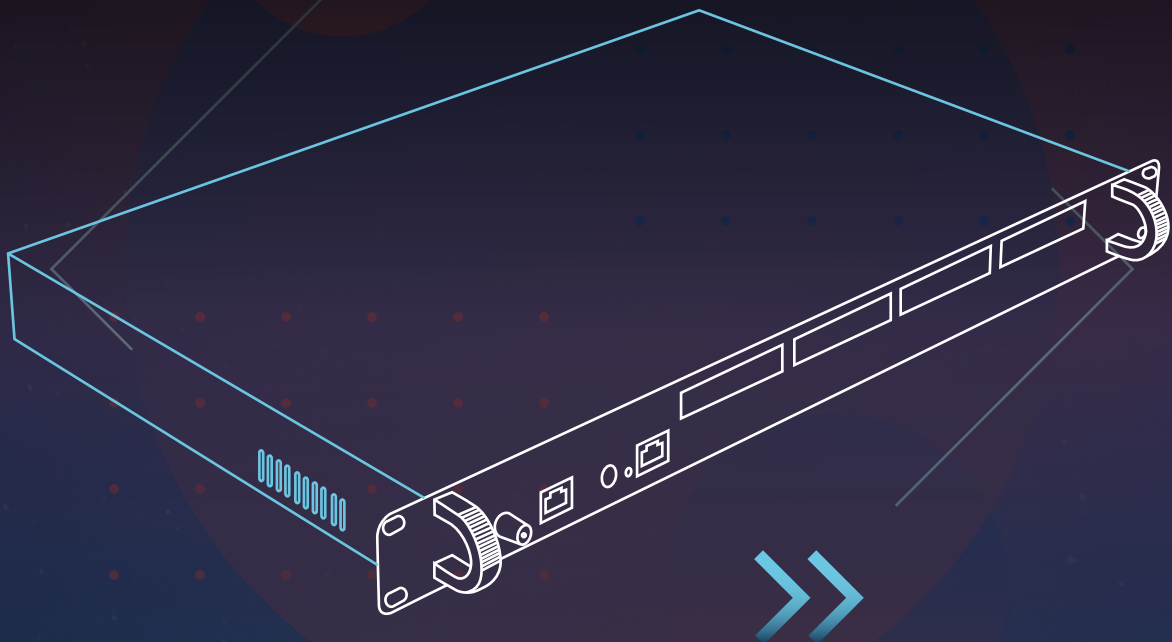


PROLINE

*Unbeatable
professional-grade
performance*



Efficient Broadcasting Made Easy

DVB-S/S2/S2X/T/T2/C/HDMI | IP IN / OUT | Powerful TS multiplexer
1U Rack design | Dual hot-swap power supplies | Fleex Embedded inside

LEMCO

www.lemco.gr

PRO LINE

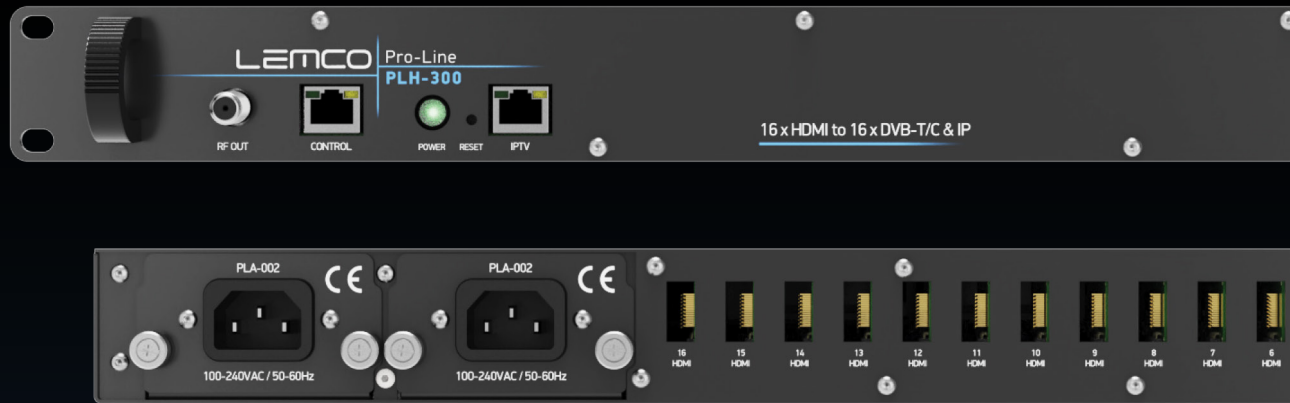
Introducing the world-class Lemco Pro Line - the ultimate headend solution that offers unbeatable professional-grade performance for businesses of all sizes.



PROLINE

This comprehensive and advanced product is the epitome of innovation, with a wide range of applications that cover all industry standards (including DVB-S/S2/S2X/T/T2/C/HDMI/IP) and a truly versatile solution that can deliver signals over DVB-T/C and IP simultaneously, making it the perfect choice for the hospitality industry.

At the heart of the Lemco Pro Line is its advanced signal processing capabilities. With its powerful TS multiplexer and 16x inputs and outputs, the Lemco Pro Line is a true industry leader that can process large volumes of data and TV/Radio programs in a single unit, rendering it an exceptional and unparalleled solution for all your signal processing needs. Moreover, the compact 1U Rack mount design is space-saving and efficient, thanks to its cutting-edge design and advanced cooling technology.



The Lemco Pro Line is also designed to host Flex Embedded, a state-of-the-art IPTV middleware that enables businesses to easily create and manage their own IPTV networks without the need for an external server, an advanced feature which is unique to the Lemco Pro Line. And with its dual external power supplies that are hot-pluggable, you can enjoy added convenience, making the Lemco Pro Line an ideal solution for businesses that require reliability, high-performance and increased effectiveness.



bringing the future
of information
& media



To top it off, the Lemco Pro Line comes with a 5-year warranty, providing you with peace of mind and protection. So if you're looking for a reliable, cutting-edge, and versatile headend system that can meet all your signal processing and delivery needs, look no further than the Lemco Pro Line. Invest in the best and take your business to the next level with this exceptional product.

Highlights



Multi-standard

Experience ultimate versatility with our Multi-standard headend solution, designed to accommodate a wide range of broadcasting requirements and industry standards. This innovative system seamlessly integrates various signal formats, including DVB-S/S2/S2X, DVB-T/T2, DVB-C, HDMI, and IP, making it the perfect choice for cable TV companies, IPTV providers, hotels, hospitals, and other similar installations.



Powerful TS multiplexer

One of the most state-of-the-art TS multiplexer is responsible of providing the "pool" technology feature as well as to offer a variety of different features such as custom NIT/SDT creation, EPG over RF and IP, LCN and more...



IPTV reception

IPTV reception mechanism in Pro Line allows for seamless reception and conversion of TV/Radio programs over IP with incredible efficiency. With support for up to 128 x SPTS / 16 x MPTS, our solution empowers businesses to effortlessly convert these programs to RF technology DVB-T/C, providing a comprehensive and versatile approach to signal processing and delivery.



IPTV streaming

The powerful IPTV streamer enables the delivery of TV and radio programming over both IP and RF channels simultaneously, with support for up to 128 x SPTS / 16 x MPTS streams.



Fleex Embedded support

Enhanced guest experience with Fleex Embedded IPTV middleware enabling control of TVs from major brands such as LG, Samsung, and Philips, and offering basic middleware functionality directly from the headend without the need for external servers



Dual power supplies

Pro Line's dual hot-pluggable external power supplies provide businesses with convenient and redundant power, ensuring uninterrupted operation and added peace of mind.



5-year warranty

Our solutions are backed by a comprehensive 5-year warranty, providing customers with the confidence that their investment is protected against defects and malfunctions. The warranty underscores our commitment to delivering reliable, high-quality products and services that meet the diverse needs of businesses across various industries.

PRO LINE



PLF series

Pro Line - Free-To-Air (FTA) series

The PLF series is a part of the Pro Line headends product line that provides Free-To-Air (FTA) models with advanced flexibility. These models offer two options - RF+IP or IP Only - for seamless integration with a wide range of applications. This feature-rich series is designed to meet the evolving needs of the broadcasting industry and offer a superior viewing experience to the end-users.

PROLINE

PLF-300

16 x DVB-S/S2/T/T2/C to 16 x DVB-T/C & IP



Features

- 16 x independent multi-standard inputs DVB-S/S2/T/T2/C
- 16 x RF output DVB-T/C (software selectable)
- MER value > 45dB
- IPTV streaming (up to 128 x SPTS / 16 x MPTS) @ 800Mbps
- IPTV reception (up to 128 x SPTS / 16 x MPTS) @ 800Mbps
- SAP/SDP support
- "Pool" technology
- PID Filtering
- Custom NIT/SDT support
- PCR re-stamping, Correction
- EPG over RF and IP
- Very friendly user interface
- Fleex Embedded support (IPTV middleware)
- 1U Rack size
- Dual "Hot pluggable" power supplies
- 5 year warranty



The PLF-300 headend from the Pro Line series is an all-in-one solution that is highly advanced and versatile, designed to meet the changing needs of the broadcasting industry. With the capability to receive up to 16 independent satellite (DVB-S/S2), terrestrial (DVB-T/T2), or cable (DVB-C) signals, the device can convert them into 16 DVB-T/C RF output channels while providing 1x Gbit IPTV simultaneously streaming for distributing FTA TV and Radio programs.

For IPTV reception applications, the device can receive up to 128x SPTS or 16x MPTS and convert them to 16 DVB-T/C RF output channels with an extra license. The PLF-300 offers unmatched flexibility with its "pool" technology, enabling users to select any program from any of the 16 x inputs and assign it to any of the 16 x RF + IP outputs.

The PLF-300 is equipped with a powerful CPU (Quad core @ 1.8GHz / 2GB RAM), responsible for controlling the device using Linux OS while providing a friendly and incredibly fast user interface. It can be remotely or locally controlled via Ethernet, adding to the device's ease of use.

The compact 1U rack size of the PLF-300, combined with its advanced features, ensures that the device consumes the minimal rack space while it has the ability to accept dual "hot-pluggable" power supplies, adding an extra level of reliability and redundancy to ensure the device remains operational even in case of a power supply failure.

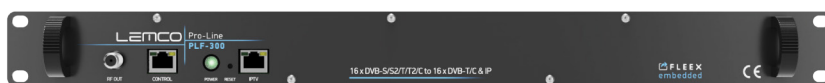
The PLF-300 can host an IPTV middleware (Fleex Embedded) without the need for any external server, enabling users to control all TV monitors in an installation, including LG, Samsung, Philips, and custom STBs, while offering a wide range of features such as Live TV, Live Radio, Info channels, Cast, Weather, Alarm, EPG, and many more.

Overall, the PLF-300 headend is an innovative and powerful device that provides advanced features and flexibility to deliver high-quality TV distribution. It's a great choice for cable TV companies, IPTV providers, hotels, hospitals, and other similar installations.



PROLINE PLF-300

16 x DVB-S/S2/T/T2/C
to 16 x DVB-T/C & IP



Input		RF Output	
Type	16 x DVB-S/S2/T/T2/C	Type	16 x DVB-T or 16 x DVB-C RF channels
Frequencies	950...2150 MHz DVB-S/S2 118...900MHz DVB-T/T2/C	Output Frequencies	2 groups of 8 adjacent channels in DVB-T 8 groups of 2 adjacent channels in DVB-C
Connector	75Ω - F, female	Output Level	110...900 MHz (10 KHz step) 90dBμV
Loop-through connector	No	Connector	75Ω - F, female
LNB		Output Attenuator	0...-30dB
Voltage	OFF / 13V / 18V	DVB-T (OUT)	
Current	Less than 400mA (per input)	Bandwidth	5, 6, 7, 8 MHz
22 kHz signal	ON / OFF	Mode	2K, 8K
22 kHz signal - Voltage	0.65V ± 0.35V	Constellation	QPSK, 16QAM, 64QAM
22 kHz signal - Frequency	22 KHz ± 4Hz	Guard interval	1/4, 1/8, 1/16, 1/32
22 kHz signal - DiSeqC	1.0 (Port A, B, C, D)	Code rate	1/2, 2/3, 3/4, 5/6, 7/8
DVB-S (IN)		MER	More than 42dB @ Full Band
Symbol rate	1 - 45 MBaud	DVB-C (OUT)	
Roll off factor	0.35	Constellation	16QAM, 32QAM, 64QAM, 128QAM, 256QAM
Code rate	1/2, 2/3, 3/4, 5/6, 7/8 (Automatic)	Symbol rate	2.5-8.4 Ms/s
Spectral inversion	Reverse, Non-reverse (Automatic)	Channel step	3...10MHz
DVB-S2 (IN)		MER	More than 40dB @ Full Band
Constellation	QPSK, 8PSK (Automatic)	IP Streaming (OUT)	
Symbol rate	1 - 45 MBaud (QPSK) - 1 - 30 MBaud (8PSK)	IP TS Out	Yes
Roll off factor	0.2 / 0.35 (Automatic)	Protocol	UDP / RTP (Multicast/Unicast)
Code rate	1/2, 3/5, 2/3, 3/4, 4/5, 5/6, 8/9, 8/10 (QPSK-Automatic) 3/5, 2/3, 3/4, 5/6, 8/9, 9/10 (8PSK-Automatic)	Speed	1 Gbit (800 Mbps in IP only mode)
Spectral inversion	Reverse, Non-reverse (Automatic)	Type	Up to 128 x SPTS or 16 x MPTS
DVB-T (IN)		SDP/SAP Support	Yes
Bandwidth	6, 7, 8 MHz	IP Streaming (IN)	
Mode	2K, 8K	Optional	Requires extra license
Constellation	QPSK, 16QAM, 64QAM	IP TS In	Yes
Guard interval	1/4, 1/8, 1/16, 1/32	Protocol	UDP / RTP (Multicast/Unicast)
Code rate	1/2, 2/3, 3/4, 5/6, 7/8	Speed	1 Gbit (800 Mbps)
DVB-T2 (IN)		Type	Up to 128 x SPTS or 16 x MPTS
Bandwidth	5, 6, 7, 8 MHz	IGMP snooping	Yes, v2 and v3
Mode	1K, 2K, 4K, 8K, 16K, 32K (Included extended mode)	Programming Interface	
Constellation	QPSK, 16QAM, 64QAM, 256QAM	Operating system	Linux OS
Code rate	1/2, 3/5, 2/3, 3/4, 4/5, 5/6	Ethernet webserver	Yes, embedded webserver
Multi PLP support	Yes	Speed	100/1000 Mbps
DVB-C (Annex A,B,C)		Connector	RJ45
Bandwidth	5, 6, 7, 8 MHz	Browser compatibility	Chrome, Firefox, Safari, Opera, Edge et al.
Mode	Automatic modulation detection	EAN-13	
Constellation	16QAM, 32QAM, 64QAM, 128QAM, 256QAM	Code	5213009761864
Transport Stream Processing		General	
Pool technology support	Yes	Power supply	115...230 VAC
Services	User selection by service names or Service ID	Frequency range	47...63Hz
Automatic regeneration	PAT, CAT, SDT, PMTs, EITs tables	Number of power supplies	Up to two(2)
NIT	Pass-through, custom, automatic	Hot-swap technology	Yes
Custom NIT/SDT creation	Yes	Power supply consumption	~60VA
PCR	Re-stamping	Operating temperature	0 °C to 40 °C
PCR correction	Yes	Storage temperature	-10 °C to +70 °C
LCN support	Yes	Humidity	Up to 90%
PID filtering	Yes	Dimensions	480 x 295 x 43.5mm
EPG information	Yes over RF and IP	Mounting	1U rack
		Weight	4.45 Kg

PROLINE

PLF-301

16 x DVB-S/S2/S2X to 16 x DVB-T/C & IP



Features

- 16 x independent multi-standard inputs DVB-S/S2/S2X
- Multi-Stream and Multi-PLP support
- 16 x RF output DVB-T/C (software selectable)
- MER value > 45dB
- IPTV streaming (up to 128 x SPTS / 16 x MPTS) @ 800Mbps
- IPTV reception (up to 128 x SPTS / 16 x MPTS) @ 800Mbps
- SAP/SDP support
- "Pool" technology
- PID Filtering
- Custom NIT/SDT support
- PCR re-stamping, Correction
- EPG over RF and IP
- Very friendly user interface
- Fleex Embedded support (IPTV middleware)
- 1U Rack size
- Dual "Hot pluggable" power supplies
- 5 year warranty



The PLF-301 headend from the Pro Line series is an all-in-one solution that is highly advanced and versatile, designed to meet the changing needs of the broadcasting industry. With the capability to receive up to 16 independent satellite (DVB-S/S2/S2X) signals while supporting multi-stream reception, the device can convert them into 16 DVB-T/C RF output channels while providing 1x Gbit IPTV simultaneously streaming for distributing FTA TV and Radio programs.

For IPTV reception applications, the device can receive up to 128x SPTS or 16x MPTS and convert them to 16 DVB-T/C RF output channels with an extra license. The PLF-300 offers unmatched flexibility with its "pool" technology, enabling users to select any program from any of the 16 x inputs and assign it to any of the 16 x RF + IP outputs.

The PLF-301 is equipped with a powerful CPU (Quad core @ 1.8GHz / 2GB RAM), responsible for controlling the device using Linux OS while providing a friendly and incredibly fast user interface. It can be remotely or locally controlled via Ethernet, adding to the device's ease of use.

The compact 1U rack size of the PLF-301, combined with its advanced features, ensures that the device consumes the minimal rack space while it has the ability to accept dual "hot-pluggable" power supplies, adding an extra level of reliability and redundancy to ensure the device remains operational even in case of a power supply failure.

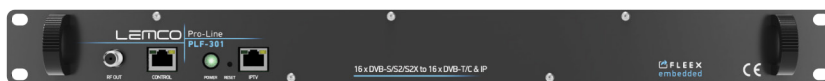
The PLF-301 can host an IPTV middleware (Fleex Embedded) without the need for any external server, enabling users to control all TV monitors in an installation, including LG, Samsung, Philips, and custom STBs, while offering a wide range of features such as Live TV, Live Radio, Info channels, Cast, Weather, Alarm, EPG, and many more.

Overall, the PLF-301 headend is an innovative and powerful device that provides advanced features and flexibility to deliver high-quality TV distribution. It's a great choice for cable TV companies, IPTV providers, hotels, hospitals, and other similar installations.



PROLINE PLF-301

16 x DVB-S/S2/S2X
to 16 x DVB-T/C & IP



Input	
Type	16 x DVB-S/S2/S2X
Frequencies	950...2150 MHz
Connector	75Ω - F, female
Loop-through connector	Yes
LNB	
Voltage	OFF / 13V / 18V
Current	Less than 400mA (per input)
22 kHz signal	ON / OFF
22 kHz signal - Voltage	0.65V ± 0.35V
22 kHz signal - Frequency	22 KHz ± 4Hz
22 kHz signal - DiSEqC	1.0 (Port A, B, C, D)
DVB-S (IN)	
Symbol rate	1 - 45 MBaud
Roll off factor	0.35
Code rate	1/2, 2/3, 3/4, 5/6, 7/8 (Automatic)
Spectral inversion	Reverse, Non-reverse (Automatic)
DVB-S2 (IN)	
Constellation	QPSK, 8PSK (Automatic)
Symbol rate	1 - 45 MBaud (QPSK) - 1 - 30 MBaud (8PSK)
Roll off factor	0.2 / 0.35 (Automatic)
Code rate	1/2, 3/5, 2/3, 3/4, 4/5, 5/6, 8/9, 8/10 (QPSK-Automatic) 3/5, 2/3, 3/4, 5/6, 8/9, 9/10 (8PSK-Automatic)
Spectral inversion	Reverse, Non-reverse (Automatic)
DVB-S2X (IN)	
Standard	EN302 307-1 V1.4.1
Constellation	QPSK, 8PSK (automatic)
Symbol rate	1 - 45 MBaud (QPSK) / 1 - 30 MBaud (8PSK)
Roll off factor	Ano 0.05 to 0.35 (automatic)
Code rate	1/2, 3/5, 2/3, 3/4, 4/5, 5/6, 8/9, 8/10 (QPSK- automatic) 3/5, 2/3, 3/4, 5/6, 8/9, 9/10 (8PSK- automatic)
Multi-stream support	Yes
T2MI MPLP (multiple PLP) signa	Yes
Transport Stream Processing	
Pool technology support	Yes
Services	User selection by service names or Service ID
Automatic regeneration	PAT, CAT, SDT, PMTs, EITs tables
NIT	Pass-through, custom, automatic
Custom NIT/SDT creation	Yes
PCR	Re-stamping
PCR correction	
LCN support	Yes
PID filtering	Yes
EPG information	Yes over RF and IP

RF Output	
Type	16 x DVB-T or 16 x DVB-C RF channels
Output Frequencies	2 groups of 8 adjacent channels in DVB-T 8 groups of 2 adjacent channels in DVB-C
Output Level	90dBμV
Connector	75Ω - F, female
Output Attenuator	0...-30dB
DVB-T (OUT)	
Bandwidth	5, 6, 7, 8 MHz
Mode	2K, 8K
Constellation	QPSK, 16QAM, 64QAM
Guard interval	1/4, 1/8, 1/16, 1/32
Code rate	1/2, 2/3, 3/4, 5/6, 7/8
MER	More than 42dB @ Full Band
DVB-C (OUT)	
Constellation	16QAM, 32QAM, 64QAM, 128QAM, 256QAM
Symbol rate	2.5-8.4 Ms/s
Channel step	3...10MHz
MER	More than 40dB @ Full Band
IP Streaming (OUT)	
IP TS Out	Yes
Protocol	UDP / RTP (Multicast/Unicast)
Speed	1 Gbit (800 Mbps in IP only mode)
Type	Up to 128 x SPTS or 16 x MPTS
SDP/SAP Support	Yes
IP Streaming (IN)	
Optional	Requires extra license
IP TS In	Yes
Protocol	UDP / RTP (Multicast/Unicast)
Speed	1 Gbit (800 Mbps)
Type	Up to 128 x SPTS or 16 x MPTS
IGMP snooping	Yes, v2 and v3
Programming Interface	
Operating system	Linux OS
Ethernet webserver	Yes, embedded webserver
Speed	100/1000 Mbps
Connector	RJ45
Browser compatibility	Chrome, Firefox, Safari, Opera, Edge et al.
EAN-13	
Code	5213009761871
General	
Power supply	115...230 VAC
Frequency range	47...63Hz
Number of power supplies	Up to two(2)
Hot-swap technology	Yes
Power supply consumption	~60VA
Operating temperature	0 °C to 40 °C
Storage temperature	-10 °C to +70 °C
Humidity	Up to 90%
Dimensions	480 x 295 x 43.5mm
Mounting	1U rack
Weight	4.45 Kg

PROLINE

PLF-200

16 x DVB-S/S2/T/T2/C to IP



Features

- 16 x independent multi-standard inputs DVB-S/S2/T/T2/C
- IPTV streaming (up to 128 x SPTS / 16 x MPTS) @ 800Mbps
- IPTV reception (up to 128 x SPTS / 16 x MPTS) @ 800Mbps
- SAP/SDP support
- "Pool" technology
- PID Filtering
- PCR re-stamping, Correction
- EPG over IP
- Very friendly user interface
- Fleex Embedded support (IPTV middleware)
- 1U Rack size
- Dual "Hot pluggable" power supplies
- 5 year warranty



The PLF-200 headend from the Pro Line series is an all-in-one solution that is highly advanced and versatile, designed to meet the changing needs of the broadcasting industry. With the capability to receive up to 16 independent satellite (DVB-S/S2), terrestrial (DVB-T/T2), or cable (DVB-C) signals, the device can convert them into 1x Gbit IPTV streaming for distributing FTA TV and Radio programs.

For IPTV reception applications, the device can receive up to 128x SPTS or 16x MPTS and convert them to 16 DVB-T/C RF output channels with an extra license. The PLF-200 offers unmatched flexibility with its "pool" technology, enabling users to select any program from any of the 16 x inputs and assign it to any of the IP outputs.

The PLF-200 is equipped with a powerful CPU (Quad core @ 1.8GHz / 2GB RAM), responsible for controlling the device using Linux OS while providing a friendly and incredibly fast user interface. It can be remotely or locally controlled via Ethernet, adding to the device's ease of use.

The compact 1U rack size of the PLF-200, combined with its advanced features, ensures that the device consumes the minimal rack space while it has the ability to accept dual "hot-pluggable" power supplies, adding an extra level of reliability and redundancy to ensure the device remains operational even in case of a power supply failure.

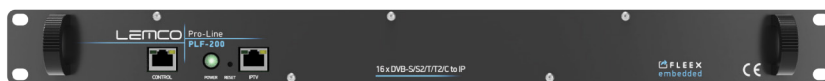
The PLF-200 can host an IPTV middleware (Fleex Embedded) without the need for any external server, enabling users to control all TV monitors in an installation, including LG, Samsung, Philips, and custom STBs, while offering a wide range of features such as Live TV, Live Radio, Info channels, Cast, Weather, Alarm, EPG, and many more.

Overall, the PLF-200 headend is an innovative and powerful device that provides advanced features and flexibility to deliver high-quality TV distribution. It's a great choice for cable TV companies, IPTV providers, hotels, hospitals, and other similar installations.



PROLINE PLF-200

16 x DVB-S/S2/T/T2/C to IP



Input		IP Streaming (OUT)	
Type	16 x DVB-S/S2/T/T2/C	IP TS Out	Yes
Frequencies	950...2150 MHz DVB-S/S2 118...900MHz DVB-T/T2/C	Protocol	UDP / RTP (Multicast/Unicast)
Connector	75Ω - F, female	Speed	1 Gbit (800 Mbps in IP only mode)
Loop-through connector	No	Type	Up to 128 x SPTS or 16 x MPTS
LNB		SDP/SAP Support	Yes
Voltage	OFF / 13V / 18V	IP Streaming (IN)	
Current	Less than 400mA (per input)	Optional	Requires extra license
22 kHz signal	ON / OFF	IP TS In	Yes
22 kHz signal - Voltage	0.65V ± 0.35V	Protocol	UDP / RTP (Multicast/Unicast)
22 kHz signal - Frequency	22 KHz ± 4Hz	Speed	1 Gbit (800 Mbps)
22 kHz signal - DiSeqC	1.0 (Port A, B, C, D)	Type	Up to 128 x SPTS or 16 x MPTS
DVB-S (IN)		IGMP snooping	Yes, v2 and v3
Symbol rate	1 - 45 MBaud	Programming Interface	
Roll off factor	0.35	Operating system	Linux OS
Code rate	1/2, 2/3, 3/4, 5/6, 7/8 (Automatic)	Ethernet webserver	Yes, embedded webserver
Spectral inversion	Reverse, Non-reverse (Automatic)	Speed	100/1000 Mbps
DVB-S2 (IN)		Connector	RJ45
Constellation	QPSK, 8PSK (Automatic)	Browser compatibility	Chrome, Firefox, Safari, Opera, Edge et al.
Symbol rate	1 - 45 MBaud (QPSK) - 1 - 30 MBaud (8PSK)	EAN-13	
Roll off factor	0.2 / 0.35 (Automatic)	Code	5213009761819
Code rate	1/2, 3/5, 2/3, 3/4, 4/5, 5/6, 8/9, 8/10 (QPSK-Automatic) 3/5, 2/3, 3/4, 5/6, 8/9, 9/10 (8PSK-Automatic)	General	
Spectral inversion	Reverse, Non-reverse (Automatic)	Power supply	115...230 VAC
DVB-T (IN)		Frequency range	47...63Hz
Bandwidth	6, 7, 8 MHz	Number of power supplies	Up to two(2)
Mode	2K, 8K	Hot-swap technology	Yes
Constellation	QPSK, 16QAM, 64QAM	Power supply consumption	~60VA
Guard interval	1/4, 1/8, 1/16, 1/32	Operating temperature	0 °C to 40 °C
Code rate	1/2, 2/3, 3/4, 5/6, 7/8	Storage temperature	-10 °C to +70 °C
DVB-T2 (IN)		Humidity	Up to 90%
Bandwidth	5, 6, 7, 8 MHz	Dimensions	480 x 295 x 43.5mm
Mode	1K, 2K, 4K, 8K, 16K, 32K (Included extended mode)	Mounting	1U rack
Constellation	QPSK, 16QAM, 64QAM, 256QAM	Weight	4.35 Kg
Code rate	1/2, 3/5, 2/3, 3/4, 4/5, 5/6		
Multi PLP support	Yes		
DVB-C (Annex A,B,C)			
Bandwidth	5, 6, 7, 8 MHz		
Mode	Automatic modulation detection		
Constellation	16QAM, 32QAM, 64QAM, 128QAM, 256QAM		
Transport Stream Processing			
Pool technology support	Yes		
Services	User selection by service names or Service ID		
Automatic regeneration	PAT, CAT, SDT, PMTs, EITs tables		
NIT	Pass-through, custom, automatic		
Custom NIT/SDT creation	Yes		
PCR	Re-stamping		
PCR correction	Yes		
LCN support	Yes		
PID filtering	Yes		
EPG information	Yes over RF and IP		

PROLINE

PLF-201

16 x DVB-S/S2/S2X to IP



Features

- 16 x independent multi-standard inputs DVB-S/S2/S2X
- Multi-Stream and Multi-PLP support
- IPTV streaming (up to 128 x SPTS / 16 x MPTS) @ 800Mbps
- IPTV reception (up to 128 x SPTS / 16 x MPTS) @ 800Mbps
- SAP/SDP support
- "Pool" technology
- PID Filtering
- PCR re-stamping, Correction
- EPG over IP
- Very friendly user interface
- Fleex Embedded support (IPTV middleware)
- 1U Rack size
- Dual "Hot pluggable" power supplies
- 5 year warranty



The PLF-201 headend from the Pro Line series is an all-in-one solution that is highly advanced and versatile, designed to meet the changing needs of the broadcasting industry. With the capability to receive up to 16 independent satellite (DVB-S/S2/S2X) signals while supporting multi-stream reception, the device can convert them into 1x Gbit IPTV streaming for distributing FTA TV and Radio programs.

For IPTV reception applications, the device can receive up to 128x SPTS or 16x MPTS and convert them to 16 DVB-T/C RF output channels with an extra license. The PLF-201 offers unmatched flexibility with its "pool" technology, enabling users to select any program from any of the 16 x inputs and assign it to any of the IP outputs.

The PLF-201 is equipped with a powerful CPU (Quad core @ 1.8GHz / 2GB RAM), responsible for controlling the device using Linux OS while providing a friendly and incredibly fast user interface. It can be remotely or locally controlled via Ethernet, adding to the device's ease of use.

The compact 1U rack size of the PLF-201, combined with its advanced features, ensures that the device consumes the minimal rack space while it has the ability to accept dual "hot-pluggable" power supplies, adding an extra level of reliability and redundancy to ensure the device remains operational even in case of a power supply failure.

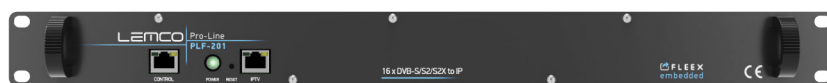
The PLF-201 can host an IPTV middleware (Fleex Embedded) without the need for any external server, enabling users to control all TV monitors in an installation, including LG, Samsung, Philips, and custom STBs, while offering a wide range of features such as Live TV, Live Radio, Info channels, Cast, Weather, Alarm, EPG, and many more.

Overall, the PLF-201 headend is an innovative and powerful device that provides advanced features and flexibility to deliver high-quality TV distribution. It's a great choice for cable TV companies, IPTV providers, hotels, hospitals, and other similar installations.



PROLINE PLF-201

16 x DVB-S/S2/S2X to IP



Input		IP Streaming (OUT)	
Type	16 x DVB-S/S2/S2X	IP TS Out	Yes
Frequencies	950...2150 MHz	Protocol	UDP / RTP (Multicast/Unicast)
Connector	75Ω - F, female	Speed	1 Gbit (800 Mbps in IP only mode)
Loop-through connector	Yes	Type	Up to 128 x SPTS or 16 x MPTS
LNB		SDP/SAP Support	Yes
Voltage	OFF / 13V / 18V	IP Streaming (IN)	
Current	Less than 400mA (per input)	Optional	Requires extra license
22 kHz signal	ON / OFF	IP TS In	Yes
22 kHz signal - Voltage	0.65V ± 0.35V	Protocol	UDP / RTP (Multicast/Unicast)
22 kHz signal - Frequency	22 KHz ± 4Hz	Speed	1 Gbit (800 Mbps)
22 kHz signal - DiSeqC	1.0 (Port A, B, C, D)	Type	Up to 128 x SPTS or 16 x MPTS
DVB-S (IN)		IGMP snooping	Yes, v2 and v3
Symbol rate	1 - 45 MBaud	Programming Interface	
Roll off factor	0.35	Operating system	Linux OS
Code rate	1/2, 2/3, 3/4, 5/6, 7/8 (Automatic)	Ethernet webserver	Yes, embedded webserver
Spectral inversion	Reverse, Non-reverse (Automatic)	Speed	100/1000 Mbps
DVB-S2 (IN)		Connector	RJ45
Constellation	QPSK, 8PSK (Automatic)	Browser compatibility	Chrome, Firefox, Safari, Opera, Edge et al.
Symbol rate	1 - 45 MBaud (QPSK) - 1 - 30 MBaud (8PSK)	EAN-13	
Roll off factor	0.2 / 0.35 (Automatic)	Code	5213009761826
Code rate	1/2, 3/5, 2/3, 3/4, 4/5, 5/6, 8/9, 8/10 (QPSK-Automatic) 3/5, 2/3, 3/4, 5/6, 8/9, 9/10 (8PSK-Automatic)	General	
Spectral inversion	Reverse, Non-reverse (Automatic)	Power supply	115...230 VAC
DVB-S2X (IN)		Frequency range	47...63Hz
Standard	EN302 307-1 V1.4.1	Number of power supplies	Up to two(2)
Constellation	QPSK, 8PSK (automatic)	Hot-swap technology	Yes
Symbol rate	1 - 45 MBaud (QPSK) / 1 - 30 MBaud (8PSK)	Power supply consumption	~60VA
Roll off factor	Ano 0.05 to 0.35 (automatic)	Operating temperature	0 °C to 40 °C
Code rate	1/2, 3/5, 2/3, 3/4, 4/5, 5/6, 8/9, 8/10 (QPSK- automatic) 3/5, 2/3, 3/4, 5/6, 8/9, 9/10 (8PSK- automatic)	Storage temperature	-10 °C to +70 °C
Multi-stream support	Yes	Humidity	Up to 90%
T2MI MPLP (multiple PLP) signa	Yes	Dimensions	480 x 295 x 43.5mm
Transport Stream Processing		Mounting	1U rack
Pool technology support	Yes	Weight	4.35 Kg
Services	User selection by service names or Service ID		
Automatic regeneration	PAT, CAT, SDT, PMTs, EITs tables		
NIT	Pass-through, custom, automatic		
Custom NIT/SDT creation	Yes		
PCR	Re-stamping		
PCR correction	Yes		
LCN support	Yes		
PID filtering	Yes		
EPG information	Yes over RF and IP		

PROLINE



PLCseries

Pro Line – Common Interface (CI) series

The PLC series is a part of the Pro Line headends product line that provides models with advanced flexibility and Common Interface support with FlexCAM technology. These models offer two options - RF+IP or IP Only - for seamless integration with a wide range of applications. This feature-rich series is designed to meet the evolving needs of the broadcasting industry and offer a superior viewing experience to the end-users.

PROLINE

PLC-300

16 x DVB-S/S2/T/T2/C + 8 x FlexCAM
to 16 x DVB-T/C & IP



Features

- 16 x independent multi-standard inputs DVB-S/S2/T/T2/C
- 16 x RF output DVB-T/C (software selectable)
- 8x Common Interfaces (FlexCAM technology)
- 16 x RF output DVB-T/C (software selectable)
- MER value > 45dB
- IPTV streaming (up to 128 x SPTS / 16 x MPTS) @ 800Mbps
- IPTV reception (up to 128 x SPTS / 16 x MPTS) @ 800Mbps
- SAP/SDP support
- "Pool" technology
- PID Filtering
- Custom NIT/SDT support
- PCR re-stamping, Correction
- EPG over RF and IP
- Very friendly user interface
- Fleex Embedded support (IPTV middleware)
- 1U Rack size
- Dual "Hot pluggable" power supplies
- 5 year warranty



The PLC-300 headend from the Pro Line series is an all-in-one solution that is highly advanced and versatile, designed to meet the changing needs of the broadcasting industry. With the capability to receive up to 16 independent satellite (DVB-S/S2), terrestrial (DVB-T/T2), or cable (DVB-C) signals, the device can convert them into 16 DVB-T/C RF output channels while providing 1x Gbit IPTV simultaneously streaming for distributing FTA TV and Radio programs.

The PLC-300 offers unparalleled flexibility in descrambling capabilities. It supports up to 8x Common Interfaces (CI) using the advanced FlexCAM technology, which allows users to connect them to either the inputs or outputs of the multiplexer. This innovative technology provides advanced descrambling flexibility, enabling the user to customize their broadcasting services to meet the unique needs of their audience.

For IPTV reception applications, the device can receive up to 128x SPTS or 16x MPTS and convert them to 16 DVB-T/C RF output channels with an extra license. The PLC-300 offers unmatched flexibility with its "pool" technology, enabling users to select any program from any of the 16 x inputs and assign it to any of the 16 x RF + IP outputs.

The PLC-300 is equipped with a powerful CPU (Quad core @ 1.8GHz / 2GB RAM), responsible for controlling the device using Linux OS while providing a friendly and incredibly fast user interface. It can be remotely or locally controlled via Ethernet, adding to the device's ease of use.

The compact 1U rack size of the PLC-300, combined with its advanced features, ensures that the device consumes the minimal rack space while it has the ability to accept dual "hot-pluggable" power supplies, adding an extra level of reliability and redundancy to ensure the device remains operational even in case of a power supply failure.

The PLC-300 can host an IPTV middleware (Fleex Embedded) without the need for any external server, enabling users to control all TV monitors in an installation, including LG, Samsung, Philips, and custom STBs, while offering a wide range of features such as Live TV, Live Radio, Info channels, Cast, Weather, Alarm, EPG, and many more.

Overall, the PLC-300 headend is an innovative and powerful device that provides advanced features and flexibility to deliver high-quality TV distribution. It's a great choice for cable TV companies, IPTV providers, hotels, hospitals, and other similar installations.



PROLINE PLC-300

16 x DVB-S/S2/T/T2/C + 8 x FlexCAM to 16 x DVB-T/C & IP



Input	
Type	16 x DVB-S/S2/T/T2/C
Frequencies	950...2150 MHz DVB-S/S2 118...900MHz DVB-T/T2/C
Connector	75Ω - F, female
Loop-through connector	No
LNB	
Voltage	OFF / 13V / 18V
Current	Less than 400mA (per input)
22 kHz signal	ON / OFF
22 kHz signal - Voltage	0.65V ± 0.35V
22 kHz signal - Frequency	22 KHz ± 4Hz
22 kHz signal - DiSeqC	1.0 (Port A, B, C, D)
DVB-S (IN)	
Symbol rate	1 - 45 MBaud
Roll off factor	0.35
Code rate	1/2, 2/3, 3/4, 5/6, 7/8 (Automatic)
Spectral inversion	Reverse, Non-reverse (Automatic)
DVB-S2 (IN)	
Constellation	QPSK, 8PSK (Automatic)
Symbol rate	1 - 45 MBaud (QPSK) - 1 - 30 MBaud (8PSK)
Roll off factor	0.2 / 0.35 (Automatic)
Code rate	1/2, 3/5, 2/3, 3/4, 4/5, 5/6, 8/9, 8/10 (QPSK-Automatic) 3/5, 2/3, 3/4, 5/6, 8/9, 9/10 (8PSK-Automatic)
Spectral inversion	Reverse, Non-reverse (Automatic)
CI Interface	
Number of Common Interfaces	8x (in total)
FlexCAM technology	Yes
Connector	PCMCIA (front access)
Max. Frequency	77MHz
DVB-T (IN)	
Bandwidth	6, 7, 8 MHz
Mode	2K, 8K
Constellation	QPSK, 16QAM, 64QAM
Guard interval	1/4, 1/8, 1/16, 1/32
Code rate	1/2, 2/3, 3/4, 5/6, 7/8
DVB-T2 (IN)	
Bandwidth	5, 6, 7, 8 MHz
Mode	1K, 2K, 4K, 8K, 16K, 32K (Included extended mode)
Constellation	QPSK, 16QAM, 64QAM, 256QAM
Code rate	1/2, 3/5, 2/3, 3/4, 4/5, 5/6
Multi PLP support	Yes
DVB-C (Annex A,B,C)	
Bandwidth	5, 6, 7, 8 MHz
Mode	Automatic modulation detection
Constellation	16QAM, 32QAM, 64QAM, 128QAM, 256QAM
Transport Stream Processing	
Pool technology support	Yes
Services	User selection by service names or Service ID
Automatic regeneration	PAT, CAT, SDT, PMTs, EITs tables
NIT	Pass-through, custom, automatic
Custom NIT/SDT creation	Yes
PCR	Re-stamping
PCR correction	Yes
LCN support	Yes
PID filtering	Yes
EPG information	Yes over RF and IP

RF Output	
Type	16 x DVB-T or 16 x DVB-C RF channels
	2 groups of 8 adjacent channels in DVB-T 8 groups of 2 adjacent channels in DVB-C
Output Frequencies	110...900 MHz (10 KHz step)
Output Level	90dBμV
Connector	75Ω - F, female
Output Attenuator	0...-30dB
DVB-T (OUT)	
Bandwidth	5, 6, 7, 8 MHz
Mode	2K, 8K
Constellation	QPSK, 16QAM, 64QAM
Guard interval	1/4, 1/8, 1/16, 1/32
Code rate	1/2, 2/3, 3/4, 5/6, 7/8
MER	More than 42dB @ Full Band
DVB-C (OUT)	
Constellation	16QAM, 32QAM, 64QAM, 128QAM, 256QAM
Symbol rate	2.5-8.4 Ms/s
Channel step	3...10MHz
MER	More than 40dB @ Full Band
IP Streaming (OUT)	
IP TS Out	Yes
Protocol	UDP / RTP (Multicast/Unicast)
Speed	1 Gbit (800 Mbps in IP only mode)
Type	Up to 128 x SPTS or 16 x MPTS
SDP/SAP Support	Yes
IP Streaming (IN)	
Optional	Requires extra license
IP TS In	Yes
Protocol	UDP / RTP (Multicast/Unicast)
Speed	1 Gbit (800 Mbps)
Type	Up to 128 x SPTS or 16 x MPTS
IGMP snooping	Yes, v2 and v3
Programming Interface	
Operating system	Linux OS
Ethernet webserver	Yes, embedded webserver
Speed	100/1000 Mbps
Connector	RJ45
Browser compatibility	Chrome, Firefox, Safari, Opera, Edge et al.
EAN-13	
Code	5213009761888
General	
Power supply	115...230 VAC
Frequency range	47...63Hz
Number of power supplies	Up to two(2)
Hot-swap technology	Yes
Power supply consumption	~65VA
Operating temperature	0 °C to 40 °C
Storage temperature	-10 °C to +70 °C
Humidity	Up to 90%
Dimensions	480 x 295 x 43.5mm
Mounting	1U rack
Weight	4.65 Kg

PROLINE

PLC-301

16 x DVB-S/S2/S2X + 8 x FlexCAM
to 16 x DVB-T/C & IP



Features

- 16 x independent multi-standard inputs DVB-S/S2/S2X
- Multi-Stream and Multi-PLP support
- 8x Common Interfaces (FlexCAM technology)
- 16 x RF output DVB-T/C (software selectable)
- MER value > 45dB
- IPTV streaming (up to 128 x SPTS / 16 x MPTS) @ 800Mbps
- IPTV reception (up to 128 x SPTS / 16 x MPTS) @ 800Mbps
- SAP/SDP support
- "Pool" technology
- PID Filtering
- Custom NIT/SDT support
- PCR re-stamping, Correction
- EPG over RF and IP
- Very friendly user interface
- Fleex Embedded support (IPTV middleware)
- 1U Rack size
- Dual "Hot pluggable" power supplies
- 5 year warranty

The PLC-301 headend from the Pro Line series is an all-in-one solution that is highly advanced and versatile, designed to meet the changing needs of the broadcasting industry. With the capability to receive up to 16 independent satellite (DVB-S/S2/S2X) signals while supporting multi-stream reception, the device can convert them into 16 DVB-T/C RF output channels while providing 1x Gbit IPTV simultaneously streaming for distributing FTA TV and Radio programs.

The PLC-301 offers unparalleled flexibility in descrambling capabilities. It supports up to 8x Common Interfaces (CI) using the advanced FlexCAM technology, which allows users to connect them to either the inputs or outputs of the multiplexer. This innovative technology provides advanced descrambling flexibility, enabling the user to customize their broadcasting services to meet the unique needs of their audience.

For IPTV reception applications, the device can receive up to 128x SPTS or 16x MPTS and convert them to 16 DVB-T/C RF output channels with an extra license. The PLC-301 offers unmatched flexibility with its "pool" technology, enabling users to select any program from any of the 16 x inputs and assign it to any of the 16 x RF + IP outputs.

The PLC-301 is equipped with a powerful CPU (Quad core @ 1.8GHz / 2GB RAM), responsible for controlling the device using Linux OS while providing a friendly and incredibly fast user interface. It can be remotely or locally controlled via Ethernet, adding to the device's ease of use.

The compact 1U rack size of the PLC-301, combined with its advanced features, ensures that the device consumes the minimal rack space while it has the ability to accept dual "hot-pluggable" power supplies, adding an extra level of reliability and redundancy to ensure the device remains operational even in case of a power supply failure.

The PLC-301 can host an IPTV middleware (Fleex Embedded) without the need for any external server, enabling users to control all TV monitors in an installation, including LG, Samsung, Philips, and custom STBs, while offering a wide range of features such as Live TV, Live Radio, Info channels, Cast, Weather, Alarm, EPG, and many more.

Overall, the PLC-301 headend is an innovative and powerful device that provides advanced features and flexibility to deliver high-quality TV distribution. It's a great choice for cable TV companies, IPTV providers, hotels, hospitals, and other similar installations.



PROLINE PLC-301

16 x DVB-S/S2/S2X + 8 x FlexCAM
to 16 x DVB-T/C & IP



Input		RF Output	
Type	16 x DVB-S/S2/S2X	Type	16 x DVB-T or 16 x DVB-C RF channels
Frequencies	950...2150 MHz		2 groups of 8 adjacent channels in DVB-T 8 groups of 2 adjacent channels in DVB-C
Connector	75Ω - F, female	Output Frequencies	110...900 MHz (10 KHz step)
Loop-through connector	Yes	Output Level	90dBμV
LNB		Connector	75Ω - F, female
Voltage	OFF / 13V / 18V	Output Attenuator	0...-30dB
Current	Less than 400mA (per input)	DVB-T (OUT)	
22 kHz signal	ON / OFF	Bandwidth	5, 6, 7, 8 MHz
22 kHz signal - Voltage	0.65V ± 0.35V	Mode	2K, 8K
22 kHz signal - Frequency	22 KHz ± 4Hz	Constellation	QPSK, 16QAM, 64QAM
22 kHz signal - DiSEqC	1.0 (Port A, B, C, D)	Guard interval	1/4, 1/8, 1/16, 1/32
DVB-S (IN)		Code rate	1/2, 2/3, 3/4, 5/6, 7/8
Symbol rate	1 - 45 MBaud	MER	More than 42dB @ Full Band
Roll off factor	0.35	DVB-C (OUT)	
Code rate	1/2, 2/3, 3/4, 5/6, 7/8 (Automatic)	Constellation	16QAM, 32QAM, 64QAM, 128QAM, 256QAM
Spectral inversion	Reverse, Non-reverse (Automatic)	Symbol rate	2.5-8.4 Ms/s
DVB-S2 (IN)		Channel step	3...10MHz
Constellation	QPSK, 8PSK (Automatic)	MER	More than 40dB @ Full Band
Symbol rate	1 - 45 MBaud (QPSK) - 1 - 30 MBaud (8PSK)	IP Streaming (OUT)	
Roll off factor	0.2 / 0.35 (Automatic)	IP TS Out	Yes
Code rate	1/2, 3/5, 2/3, 3/4, 4/5, 5/6, 8/9, 8/10 (QPSK-Automatic) 3/5, 2/3, 3/4, 5/6, 8/9, 9/10 (8PSK-Automatic)	Protocol	UDP / RTP (Multicast/Unicast)
Spectral inversion	Reverse, Non-reverse (Automatic)	Speed	1 Gbit (800 Mbps in IP only mode)
DVB-S2X (IN)		Type	Up to 128 x SPTS or 16 x MPTS
Standard	EN302 307-1 V1.4.1	SDP/SAP Support	Yes
Constellation	QPSK, 8PSK (automatic)	IP Streaming (IN)	
Symbol rate	1 - 45 MBaud (QPSK) / 1 - 30 MBaud (8PSK)	Optional	Requires extra license
Roll off factor	Anó 0.05 to 0.35 (automatic)	IP TS In	Yes
Code rate	1/2, 3/5, 2/3, 3/4, 4/5, 5/6, 8/9, 8/10 (QPSK- automatic) 3/5, 2/3, 3/4, 5/6, 8/9, 9/10 (8PSK- automatic)	Protocol	UDP / RTP (Multicast/Unicast)
Multi-stream support	Yes	Speed	1 Gbit (800 Mbps)
T2MI MPLP (multiple PLP) signa	Yes	Type	Up to 128 x SPTS or 16 x MPTS
CI Interface		IGMP snooping	Yes, v2 and v3
Number of Common Interfaces	8x (in total)	Programming Interface	
FlexCAM technology	Yes	Operating system	Linux OS
Connector	PCMCIA (front access)	Ethernet webserver	Yes, embedded webserver
Max. Frequency	77MHz	Speed	100/1000 Mbps
Transport Stream Processing		Connector	RJ45
Pool technology support	Yes	Browser compatibility	Chrome, Firefox, Safari, Opera, Edge et al.
Services	User selection by service names or Service ID	EAN-13	
Automatic regeneration	PAT, CAT, SDT, PMTs, EITs tables	Code	5213009761895
NIT	Pass-through, custom, automatic	General	
Custom NIT/SDT creation	Yes	Power supply	115...230 VAC
PCR	Re-stamping	Frequency range	47...63Hz
PCR correction	Yes	Number of power supplies	Up to two(2)
LCN support	Yes	Hot-swap technology	Yes
PID filtering	Yes	Power supply consumption	~65VA
EPG information	Yes over RF and IP	Operating temperature	0 °C to 40 °C
		Storage temperature	-10 °C to +70 °C
		Humidity	Up to 90%
		Dimensions	480 x 295 x 43.5mm
		Mounting	1U rack
		Weight	4.65 Kg

PROLINE

PLC-200

16 x DVB-S/S2/T/T2/C + 8 x FlexCAM to IP



Features

- 16 x independent multi-standard inputs DVB-S/S2/T/T2/C
- 8x Common Interfaces (FlexCAM technology)
- IPTV streaming (up to 128 x SPTS / 16 x MPTS) @ 800Mbps
- IPTV reception (up to 128 x SPTS / 16 x MPTS) @ 800Mbps
- SAP/SDP support
- "Pool" technology
- PID Filtering
- PCR re-stamping, Correction
- EPG over IP
- Very friendly user interface
- Fleex Embedded support (IPTV middleware)
- 1U Rack size
- Dual "Hot pluggable" power supplies
- 5 year warranty



The PLC-200 headend from the Pro Line series is an all-in-one solution that is highly advanced and versatile, designed to meet the changing needs of the broadcasting industry. With the capability to receive up to 16 independent satellite (DVB-S/S2), terrestrial (DVB-T/T2), or cable (DVB-C) signals, the device can convert them into 1x Gbit IPTV streaming for distributing FTA TV and Radio programs.

The PLC-200 offers unparalleled flexibility in descrambling capabilities. It supports up to 8x Common Interfaces (CI) using the advanced FlexCAM technology, which allows users to connect them to either the inputs or outputs of the multiplexer. This innovative technology provides advanced descrambling flexibility, enabling the user to customize their broadcasting services to meet the unique needs of their audience.

For IPTV reception applications, the device can receive up to 128x SPTS or 16x MPTS and convert them to 16 DVB-T/C RF output channels with an extra license. The PLC-200 offers unmatched flexibility with its "pool" technology, enabling users to select any program from any of the 16 x inputs and assign it to any of the IP outputs.

The PLC-200 is equipped with a powerful CPU (Quad core @ 1.8GHz / 2GB RAM), responsible for controlling the device using Linux OS while providing a friendly and incredibly fast user interface. It can be remotely or locally controlled via Ethernet, adding to the device's ease of use.

The compact 1U rack size of the PLC-200, combined with its advanced features, ensures that the device consumes the minimal rack space while it has the ability to accept dual "hot-pluggable" power supplies, adding an extra level of reliability and redundancy to ensure the device remains operational even in case of a power supply failure.

The PLC-200 can host an IPTV middleware (Fleex Embedded) without the need for any external server, enabling users to control all TV monitors in an installation, including LG, Samsung, Philips, and custom STBs, while offering a wide range of features such as Live TV, Live Radio, Info channels, Cast, Weather, Alarm, EPG, and many more.

Overall, the PLC-200 headend is an innovative and powerful device that provides advanced features and flexibility to deliver high-quality TV distribution. It's a great choice for cable TV companies, IPTV providers, hotels, hospitals, and other similar installations.



PROLINE PLC-200

16 x DVB-S/S2/T/T2/C + 8 x FlexCAM to IP



Input		IP Streaming (OUT)	
Type	16 x DVB-S/S2/T/T2/C	IP TS Out	Yes
Frequencies	950...2150 MHz DVB-S/S2 118...900MHz DVB-T/T2/C	Protocol	UDP / RTP (Multicast/Unicast)
Connector	75Ω - F, female	Speed	1 Gbit (800 Mbps in IP only mode)
Loop-through connector	No	Type	Up to 128 x SPTS or 16 x MPTS
LNB		SDP/SAP Support	Yes
Voltage	OFF / 13V / 18V	IP Streaming (IN)	
Current	Less than 400mA (per input)	Optional	Requires extra license
22 kHz signal	ON / OFF	IP TS In	Yes
22 kHz signal - Voltage	0.65V ± 0.35V	Protocol	UDP / RTP (Multicast/Unicast)
22 kHz signal - Frequency	22 KHz ± 4Hz	Speed	1 Gbit (800 Mbps)
22 kHz signal - DiSEqC	1.0 (Port A, B, C, D)	Type	Up to 128 x SPTS or 16 x MPTS
DVB-S (IN)		IGMP snooping	Yes, v2 and v3
Symbol rate	1 - 45 MBaud	Programming Interface	
Roll off factor	0.35	Operating system	Linux OS
Code rate	1/2, 2/3, 3/4, 5/6, 7/8 (Automatic)	Ethernet webserver	Yes, embedded webserver
Spectral inversion	Reverse, Non-reverse (Automatic)	Speed	100/1000 Mbps
DVB-S2 (IN)		Connector	RJ45
Constellation	QPSK, 8PSK (Automatic)	Browser compatibility	Chrome, Firefox, Safari, Opera, Edge et al.
Symbol rate	1 - 45 MBaud (QPSK) - 1 - 30 MBaud (8PSK)	EAN-13	
Roll off factor	0.2 / 0.35 (Automatic)	Code	5213009761833
Code rate	1/2, 3/5, 2/3, 3/4, 4/5, 5/6, 8/9, 8/10 (QPSK-Automatic) 3/5, 2/3, 3/4, 5/6, 8/9, 9/10 (8PSK-Automatic)	General	
Spectral inversion	Reverse, Non-reverse (Automatic)	Power supply	115...230 VAC
CI Interface		Frequency range	47...63Hz
Number of Common Interfaces	8x (in total)	Number of power supplies	Up to two(2)
FlexCAM technology	Yes	Hot-swap technology	Yes
Connector	PCMCIA (front access)	Power supply consumption	~60VA
Max. Frequency	77MHz	Operating temperature	0 °C to 40 °C
DVB-T (IN)		Storage temperature	-10 °C to +70 °C
Bandwidth	6, 7, 8 MHz	Humidity	Up to 90%
Mode	2K, 8K	Dimensions	480 x 295 x 43.5mm
Constellation	QPSK, 16QAM, 64QAM	Mounting	1U rack
Guard interval	1/4, 1/8, 1/16, 1/32	Weight	4.35 Kg
Code rate	1/2, 2/3, 3/4, 5/6, 7/8		
DVB-T2 (IN)			
Bandwidth	5, 6, 7, 8 MHz		
Mode	1K, 2K, 4K, 8K, 16K, 32K (Included extended mode)		
Constellation	QPSK, 16QAM, 64QAM, 256QAM		
Code rate	1/2, 3/5, 2/3, 3/4, 4/5, 5/6		
Multi PLP support	Yes		
DVB-C (Annex A,B,C)			
Bandwidth	5, 6, 7, 8 MHz		
Mode	Automatic modulation detection		
Constellation	16QAM, 32QAM, 64QAM, 128QAM, 256QAM		
Transport Stream Processing			
Pool technology support	Yes		
Services	User selection by service names or Service ID		
Automatic regeneration	PAT, CAT, SDT, PMTs, EITs tables		
NIT	Pass-through, custom, automatic		
Custom NIT/SDT creation	Yes		
PCR	Re-stamping		
PCR correction	Yes		
LCN support	Yes		
PID filtering	Yes		
EPG information	Yes over RF and IP		

PROLINE

PLC-201

16 x DVB-S/S2/S2X + 8 x FlexCAM to IP



Features

- 16 x independent multi-standard inputs DVB-S/S2/S2X
- Multi-Stream and Multi-PLP support
- 8x Common Interfaces (FlexCAM technology)
- IPTV streaming (up to 128 x SPTS / 16 x MPTS) @ 800Mbps
- IPTV reception (up to 128 x SPTS / 16 x MPTS) @ 800Mbps
- SAP/SDP support
- "Pool" technology
- PID Filtering
- PCR re-stamping, Correction
- EPG over IP
- Very friendly user interface
- Fleex Embedded support (IPTV middleware)
- 1U Rack size
- Dual "Hot pluggable" power supplies
- 5 year warranty



The PLC-201 headend from the Pro Line series is an all-in-one solution that is highly advanced and versatile, designed to meet the changing needs of the broadcasting industry. With the capability to receive up to 16 independent satellite (DVB-S/S2/S2X) signals while supporting multi-stream reception, the device can convert them into 1x Gbit IPTV streaming for distributing FTA TV and Radio programs.

The PLC-201 offers unparalleled flexibility in descrambling capabilities. It supports up to 8x Common Interfaces (CI) using the advanced FlexCAM technology, which allows users to connect them to either the inputs or outputs of the multiplexer. This innovative technology provides advanced descrambling flexibility, enabling the user to customize their broadcasting services to meet the unique needs of their audience.

For IPTV reception applications, the device can receive up to 128x SPTS or 16x MPTS and convert them to 16 DVB-T/C RF output channels with an extra license. The PLC-201 offers unmatched flexibility with its "pool" technology, enabling users to select any program from any of the 16 x inputs and assign it to any of the IP outputs.

The PLC-201 is equipped with a powerful CPU (Quad core @ 1.8GHz / 2GB RAM), responsible for controlling the device using Linux OS while providing a friendly and incredibly fast user interface. It can be remotely or locally controlled via Ethernet, adding to the device's ease of use.

The compact 1U rack size of the PLC-201, combined with its advanced features, ensures that the device consumes the minimal rack space while it has the ability to accept dual "hot-pluggable" power supplies, adding an extra level of reliability and redundancy to ensure the device remains operational even in case of a power supply failure.

The PLC-201 can host an IPTV middleware (Fleex Embedded) without the need for any external server, enabling users to control all TV monitors in an installation, including LG, Samsung, Philips, and custom STBs, while offering a wide range of features such as Live TV, Live Radio, Info channels, Cast, Weather, Alarm, EPG, and many more.

Overall, the PLC-201 headend is an innovative and powerful device that provides advanced features and flexibility to deliver high-quality TV distribution. It's a great choice for cable TV companies, IPTV providers, hotels, hospitals, and other similar installations.



PROLINE PLC-201

16 x DVB-S/S2/S2X + 8 x FlexCAM to IP



Input	
Type	16 x DVB-S/S2/S2X
Frequencies	950...2150 MHz
Connector	75Ω - F, female
Loop-through connector	Yes
LNB	
Voltage	OFF / 13V / 18V
Current	Less than 400mA (per input)
22 kHz signal	ON / OFF
22 kHz signal - Voltage	0.65V ± 0.35V
22 kHz signal - Frequency	22 KHz ± 4Hz
22 kHz signal - DiSeqC	1.0 (Port A, B, C, D)
DVB-S (IN)	
Symbol rate	1 - 45 MBaud
Roll off factor	0.35
Code rate	1/2, 2/3, 3/4, 5/6, 7/8 (Automatic)
Spectral inversion	Reverse, Non-reverse (Automatic)
DVB-S2 (IN)	
Constellation	QPSK, 8PSK (Automatic)
Symbol rate	1 - 45 MBaud (QPSK) - 1 - 30 MBaud (8PSK)
Roll off factor	0.2 / 0.35 (Automatic)
Code rate	1/2, 3/5, 2/3, 3/4, 4/5, 5/6, 8/9, 8/10 (QPSK-Automatic) 3/5, 2/3, 3/4, 5/6, 8/9, 9/10 (8PSK-Automatic)
Spectral inversion	Reverse, Non-reverse (Automatic)
DVB-S2X (IN)	
Standard	EN302 307-1 V1.4.1
Constellation	QPSK, 8PSK (automatic)
Symbol rate	1 - 45 MBaud (QPSK) / 1 - 30 MBaud (8PSK)
Roll off factor	Anó 0.05 to 0.35 (automatic)
Code rate	1/2, 3/5, 2/3, 3/4, 4/5, 5/6, 8/9, 8/10 (QPSK- automatic) 3/5, 2/3, 3/4, 5/6, 8/9, 9/10 (8PSK- automatic)
Multi-stream support	Yes
T2MI MPLP (multiple PLP) signa	Yes
CI Interface	
Number of Common Interfaces	8x (in total)
FlexCAM technology	Yes
Connectror	PCMCIA (front access)
Max. Frequency	77MHz
Transport Stream Processing	
Pool technology support	Yes
Services	User selection by service names or Service ID
Automatic regeneration	PAT, CAT, SDT, PMTs, EITs tables
NIT	Pass-through, custom, automatic
Custom NIT/SDT creation	Yes
PCR	Re-stamping
PCR correction	Yes
LCN support	Yes
PID filtering	Yes
EPG information	Yes over RF and IP

IP Streaming (OUT)	
IP TS Out	Yes
Protocol	UDP / RTP (Multicast/Unicast)
Speed	1 Gbit (800 Mbps in IP only mode)
Type	Up to 128 x SPTS or 16 x MPTS
SDP/SAP Support	Yes
IP Streaming (IN)	
Optional	Requires extra license
IP TS In	Yes
Protocol	UDP / RTP (Multicast/Unicast)
Speed	1 Gbit (800 Mbps)
Type	Up to 128 x SPTS or 16 x MPTS
IGMP snooping	Yes, v2 and v3
Programming Interface	
Operating system	Linux OS
Ethernet webserver	Yes, embedded webserver
Speed	100/1000 Mbps
Connector	RJ45
Browser compatibility	Chrome, Firefox, Safari, Opera, Edge et al.
EAN-13	
Code	5213009761840
General	
Power supply	115...230 VAC
Frequency range	47...63Hz
Number of power supplies	Up to two(2)
Hot-swap technology	Yes
Power supply consumption	~65VA
Operating temperature	0 °C to 40 °C
Storage temperature	-10 °C to +70 °C
Humidity	Up to 90%
Dimensions	480 x 295 x 43.5mm
Mounting	1U rack
Weight	4.55 Kg

PRO LINE



PLH series

Pro Line – HDMI series

The PLH series is a part of the Pro Line headends product line that provides models with advanced flexibility and HDMI interfaces. These models offer two options - RF+IP or IP Only - for seamless integration with a wide range of applications. This feature-rich series is designed to meet the evolving needs of the broadcasting industry and offer a superior viewing experience to the end-users.

PROLINE

PLH-300

16 x HDMI to 16 x DVB-T/C & IP

Features

- 16 x HDMI inputs
- Full HD H.264 encoding
- HDCP v1.4 support
- 16 x RF output DVB-T/C (software selectable)
- MER value > 45dB
- IPTV streaming (up to 128 x SPTS / 16 x MPTS) @ 800Mbps
- IPTV reception (up to 128 x SPTS / 16 x MPTS) @ 800Mbps
- SAP/SDP support
- "Pool" technology
- PID Filtering
- Custom NIT/SDT support
- Very friendly user interface
- Fleex Embedded support (IPTV middleware)
- 1U Rack size
- Dual "Hot pluggable" power supplies
- 5 year warranty



The PLH-300 headend from the Pro Line series is an all-in-one solution that is highly advanced and versatile, designed to meet the changing needs of the broadcasting industry. With the capability to receive up to 16 independent HDMI inputs while supporting HDCP technology, the device can convert them into 16 DVB-T/C RF output channels while providing 1x Gbit IPTV simultaneously streaming for distributing FTA TV and Radio programs.

For IPTV reception applications, the device can receive up to 128x SPTS or 16x MPTS and convert them to 16 DVB-T/C RF output channels with an extra license. The PLH-300 offers unmatched flexibility with its "pool" technology, enabling users to select any program from any of the 16 x inputs and assign it to any of the 16 x RF + IP outputs.

The PLH-300 is equipped with a powerful CPU (Quad core @ 1.8GHz / 2GB RAM), responsible for controlling the device using Linux OS while providing a friendly and incredibly fast user interface. It can be remotely or locally controlled via Ethernet, adding to the device's ease of use.

The compact 1U rack size of the PLH-300, combined with its advanced features, ensures that the device consumes the minimal rack space while it has the ability to accept dual "hot-pluggable" power supplies, adding an extra level of reliability and redundancy to ensure the device remains operational even in case of a power supply failure.

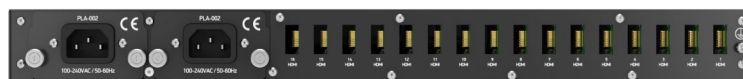
The PLH-300 can host an IPTV middleware (Fleex Embedded) without the need for any external server, enabling users to control all TV monitors in an installation, including LG, Samsung, Philips, and custom STBs, while offering a wide range of features such as Live TV, Live Radio, Info channels, Cast, Weather, Alarm, EPG, and many more.

Overall, the PLH-300 headend is an innovative and powerful device that provides advanced features and flexibility to deliver high-quality TV distribution. It's a great choice for cable TV companies, IPTV providers, hotels, hospitals, and other similar installations.

PROLINE

PLH-300

16 x HDMI to 16 x DVB-T/C & IP



Input		IP Streaming (OUT)	
Type	16 x HDMI	IP TS Out	Yes
Video		Protocol	UDP / RTP (Multicast/Unicast)
Video coding	MPEG-4 AVC / H.264	Speed	1 Gbit (800 Mbps in IP only mode)
Profile	High profile 4.0	Type	Up to 16 x SPTS or 16 x MPTS
Input resolution	Up to 1920 1080 - 50/60 p & i	SDP/SAP Support	Yes
Output resolution	Up to 1920 1080 - 30p	IP Streaming (IN)	
HDCP support	Yes, v1.4	Optional	Requires extra license
Audio		IP TS In	Yes
Audio	HD	Protocol	UDP / RTP (Multicast/Unicast)
Standard	MPEG-1 Layer II	Speed	1 Gbit (800 Mbps)
Audio Bit Rate	64, 96, 128, 192, 256, 320 Kbps	Type	128 x SPTS or 16 x MPTS
Format	MPEG2, AAC, AC3	IGMP snooping	Yes, v2 and v3
H.264 encoder		Programming Interface	
Standard	MPEG-4 AVC / H.264	Operating system	Linux OS
Bit Rate	1 – 19 Mbps adjustable	Ethernet webserver	Yes, embedded webserver
Configurable Parameters	Service Name, Service ID	Speed	100/1000 Mbps
LCN processing	Yes	Connector	RJ45
Transport Stream Processing		Browser compatibility	Chrome, Firefox, Safari, Opera, Edge et al.
Pool technology support	Yes	EAN-13	
Services	User selection by service names or Service ID	Code	5213009761901
Automatic regeneration	PAT, CAT, SDT, PMTs, EITs tables	General	
NIT	Pass-through, custom, automatic	Power supply	115...230 VAC
Custom NIT/SDT creation	Yes	Frequency range	47...63Hz
LCN support	Yes	Number of power supplies	Up to two(2)
PID filtering	Yes	Hot-swap technology	Yes
RF Output		Power supply consumption	~60VA
Type	16 DVB-T or 16 x DVB-C RF channels	Operating temperature	0 °C to 40 °C
	2 groups of 8 adjacent channels in DVB-T	Storage temperature	-10 °C to +70 °C
	8 groups of 2 adjacent channels in DVB-C	Humidity	Up to 90%
Output Frequencies	110...900 MHz (10 KHz step)	Dimensions	480 x 295 x 43.5mm
Output Level	90dB μ V	Mounting	1U rack
Connector	75 Ω - F, female	Weight	4.20 Kg
Output Attenuator	0...-30dB		
DVB-T (OUT)			
Bandwidth	5, 6, 7, 8 MHz		
Mode	2K, 8K		
Constellation	QPSK, 16QAM, 64QAM		
Guard interval	1/4, 1/8, 1/16, 1/32		
Code rate	1/2, 2/3, 3/4, 5/6, 7/8		
MER	More than 42dB @ Full Band		
DVB-C (OUT)			
Constellation	16QAM, 32QAM, 64QAM, 128QAM, 256QAM		
Symbol rate	2.5-8.4 Ms/s		
Channel step	3...10MHz		
MER	More than 40dB @ Full Band		

PROLINE

PLH-200

16 x HDMI to IP

Features

- 16 x HDMI inputs
- Full HD H.264 encoding
- HDCP v1.4 support
- IPTV streaming (up to 128 x SPTS / 16 x MPTS) @ 800Mbps
- IPTV reception (up to 128 x SPTS / 16 x MPTS) @ 800Mbps
- SAP/SDP support
- "Pool" technology
- PID Filtering
- Very friendly user interface
- Fleex Embedded support (IPTV middleware)
- 1U Rack size
- Dual "Hot pluggable" power supplies
- 5 year warranty



The PLH-200 headend from the Pro Line series is an all-in-one solution that is highly advanced and versatile, designed to meet the changing needs of the broadcasting industry. With the capability to receive up to 16 independent HDMI inputs while supporting HDCP technology, the device can convert them into 1x Gbit IPTV streaming for distributing FTA TV and Radio programs.

For IPTV reception applications, the device can receive up to 128x SPTS or 16x MPTS and convert them to 16 DVB-T/C RF output channels with an extra license. The PLH-200 offers unmatched flexibility with its "pool" technology, enabling users to select any program from any of the 16 x inputs and assign it to any of the 16 x RF + IP outputs.

The PLH-200 is equipped with a powerful CPU (Quad core @ 1.8GHz / 2GB RAM), responsible for controlling the device using Linux OS while providing a friendly and incredibly fast user interface. It can be remotely or locally controlled via Ethernet, adding to the device's ease of use.

The compact 1U rack size of the PLH-200, combined with its advanced features, ensures that the device consumes the minimal rack space while it has the ability to accept dual "hot-pluggable" power supplies, adding an extra level of reliability and redundancy to ensure the device remains operational even in case of a power supply failure.

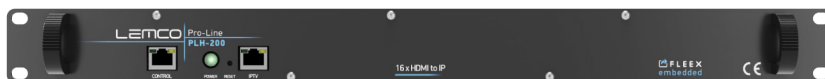
The PLH-200 can host an IPTV middleware (Fleex Embedded) without the need for any external server, enabling users to control all TV monitors in an installation, including LG, Samsung, Philips, and custom STBs, while offering a wide range of features such as Live TV, Live Radio, Info channels, Cast, Weather, Alarm, EPG, and many more.

Overall, the PLH-200 headend is an innovative and powerful device that provides advanced features and flexibility to deliver high-quality TV distribution. It's a great choice for cable TV companies, IPTV providers, hotels, hospitals, and other similar installations.



PROLINE PLH-200

16 x HDMI to IP



Input			
Type	16 x HDMI		
Video			
Video coding	MPEG-4 AVC / H.264		
Profile	High profile 4.0		
Input resolution	Up to 1920 1080 - 50/60 p & i		
Output resolution	Up to 1920 1080 - 30p		
HDCP support	Yes, v1.4		
Audio			
Audio	HD		
Standard	MPEG-1 Layer II		
Audio Bit Rate	64, 96, 128, 192, 256, 320 Kbps		
Format	MPEG2, AAC, AC3		
H.264 encoder			
Standard	MPEG-4 AVC / H.264		
Bit Rate	1 – 19 Mbps adjustable		
Configurable Parameters	Service Name, Service ID		
LCN processing	Yes		
Transport Stream Processing			
Pool technology support	Yes		
Services	User selection by service names or Service ID		
Automatic regeneration	PAT, CAT, SDT, PMTs, EITs tables		
NIT	Pass-through, custom, automatic		
Custom NIT/SDT creation	Yes		
LCN support	Yes		
PID filtering	Yes		
IP Streaming (OUT)			
IP TS Out	Yes		
Protocol	UDP / RTP (Multicast/Unicast)		
Speed	1 Gbit (800 Mbps in IP only mode)		
Type	Up to 16 x SPTS or 16 x MPTS		
SDP/SAP Support	Yes		
IP Streaming (IN)			
Optional		Requires extra license	
IP TS In		Yes	
Protocol		UDP / RTP (Multicast/Unicast)	
Speed		1 Gbit (480 Mbps)	
Type		128 x SPTS or 16 x MPTS	
IGMP snooping		Yes, v2 and v3	
Programming Interface			
Operating system		Linux OS	
Ethernet webserver		Yes, embedded webserver	
Speed		100/1000 Mbps	
Connector		RJ45	
Browser compatibility		Chrome, Firefox, Safari, Opera, Edge et al.	
EAN-13			
Code		5213009761857	
General			
Power supply		115 ... 230 VAC	
Frequency range		47 ... 63Hz	
Number of power supplies		Up to two(2)	
Hot-swap technology		Yes	
Power supply consumption		~60VA	
Operating temperature		0 °C to 40 °C	
Storage temperature		-10 °C to +70 °C	
Humidity		Up to 90%	
Dimensions		480 x 295 x 43.5mm	
Mounting		1U rack	
Weight		4.10 Kg	

PRO LINE



PLI series

Pro Line – IP series

The PLI series is a part of the Pro Line headends product line that provides models with advanced flexibility and IP input only capabilities. The provided model offers two options - RF+IP or IP Output Only - for seamless integration with a wide range of applications. This feature-rich series is designed to meet the evolving needs of the broadcasting industry and offer a superior viewing experience to the end-users.

PROLINE

PLI-400

IP 128SPTS (UDP/RTP) to 16 x DVB-T/C



Features

- IPTV reception (up to 128 x SPTS / 16 x MPTS) @ 800Mbps
- 16 x RF output DVB-T/C (software selectable)
- MER value > 45dB
- IPTV streaming (up to 128 x SPTS / 16 x MPTS) @ 800Mbps
- SAP/SDP support
- "Pool" technology
- PID Filtering
- Custom NIT/SDT support
- PCR re-stamping, Correction
- EPG over RF and IP
- Very friendly user interface
- Fleex Embedded support (IPTV middleware)
- 1U Rack size
- Dual "Hot pluggable" power supplies
- 5 year warranty



The PLI-400 headend from the Pro Line series is an all-in-one solution that is highly advanced and versatile, designed to meet the changing needs of the broadcasting industry. With the capability to receive up to 128 x SPTS / 16 x MPTS IPTV signals, the device can convert them into 16 DVB-T/C RF output channels while providing 1x Gbit IPTV simultaneously streaming for distributing FTA TV and Radio programs.

The PLI-400 is equipped with a powerful CPU (Quad core @ 1.8GHz / 2GB RAM), responsible for controlling the device using Linux OS while providing a friendly and incredibly fast user interface. It can be remotely or locally controlled via Ethernet, adding to the device's ease of use.

The compact 1U rack size of the PLI-400, combined with its advanced features, ensures that the device consumes the minimal rack space while it has the ability to accept dual "hot-pluggable" power supplies, adding an extra level of reliability and redundancy to ensure the device remains operational even in case of a power supply failure.

The PLI-400 can host an IPTV middleware (Fleex Embedded) without the need for any external server, enabling users to control all TV monitors in an installation, including LG, Samsung, Philips, and custom STBs, while offering a wide range of features such as Live TV, Live Radio, Info channels, Cast, Weather, Alarm, EPG, and many more.

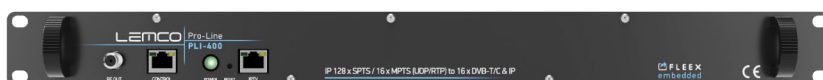
Overall, the PLI-400 headend is an innovative and powerful device that provides advanced features and flexibility to deliver high-quality TV distribution. It's a great choice for cable TV companies, IPTV providers, hotels, hospitals, and other similar installations.



PROLINE

PLI-400

IP 128SPTS (UDP/RTP) to 16 x DVB-T/C

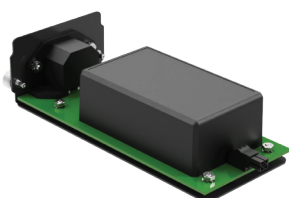
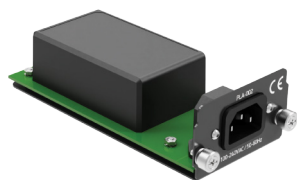


IP Streaming (IN)		IP Streaming (OUT)	
Optional	Requires extra license	IP TS Out	Yes
IP TS In	Yes	Protocol	UDP / RTP (Multicast/Unicast)
Protocol	UDP / RTP (Multicast/Unicast)	Speed	1 Gbit (800 Mbps in IP only mode)
Speed	1 Gbit (800 Mbps)	Type	128 x SPTS or 16 x MPTS
Type	128 x SPTS or 16 x MPTS	SDP/SAP Support	Yes
IGMP snooping	Yes, v2 and v3	Programming Interface	
Transport Stream Processing		Operating system	Linux OS
Pool technology support	Yes	Ethernet webserver	Yes, embedded webserver
Services	User selection by service names or Service ID	Speed	100/1000 Mbps
Automatic regeneration	PAT, CAT, SDT, PMTs, EITs tables	Connector	RJ45
NIT	Pass-through, custom, automatic	Browser compatibility	Chrome, Firefox, Safari, Opera, Edge et al.
Custom NIT/SDT creation	Yes	EAN-13	
PCR	Re-stamping	Code	5213009761918
PCR correction	Yes	General	
LCN support	Yes	Power supply	115...230 VAC
PID filtering	Yes	Frequency range	47...63Hz
EPG information	Yes over RF and IP	Number of power supplies	Up to two(2)
RF Output		Hot-swap technology	Yes
Type	16 x DVB-T or 16 x DVB-C RF channels	Power supply consumption	~40VA
	2 groups of 8 adjacent channels in DVB-T	Operating temperature	0 °C to 40 °C
	8 groups of 2 adjacent channels in DVB-C	Storage temperature	-10 °C to +70 °C
Output Frequencies	110...900 MHz (10 KHz step)	Humidity	Up to 90%
Output Level	90dB μ V	Dimensions	480 x 295 x 43.5mm
Connector	75 Ω - F, female	Mounting	1U rack
Output Attenuator	0...-30dB	Weight	3.75 Kg
DVB-T (OUT)			
Bandwidth	5, 6, 7, 8 MHz		
Mode	2K, 8K		
Constellation	QPSK, 16QAM, 64QAM		
Guard interval	1/4, 1/8, 1/16, 1/32		
Code rate	1/2, 2/3, 3/4, 5/6, 7/8		
MER	More than 42dB @ Full Band		
DVB-C (OUT)			
Constellation	16QAM, 32QAM, 64QAM, 128QAM, 256QAM		
Symbol rate	2.5-8.4 Ms/s		
Channel step	3...10MHz		
MER	More than 40dB @ Full Band		

PROLINE

PLA-002

External power supply for Pro Line series



The PLA-002 power supply is a highly reliable and efficient device that provides uninterrupted power supply to Pro Line headend series. Despite its compact size, the PLA-002 delivers impressive power output, ensuring that even the most demanding broadcasting operations run smoothly.

Designed with safety in mind, the PLA-002 is equipped with advanced protection features that safeguard against overloading, overheating, and short-circuiting. This ensures that the device remains operational, even in the event of unexpected power surges or failures.

In addition to its impressive technical capabilities, the PLA-002 is also incredibly easy to install and maintain, making it a popular choice among broadcasting professionals.

Input power	
Voltage range	110...240VAC
Frequency range	50/60Hz
Leakage current	< 0.25mA @ 240VAC
Output power	
Voltage	12VDC
Current	6.7A max.
Ripple & Noise	120mVp-p
Protection	
Overload	115-160% rated output power
Over-voltage	12.6-16.2V
Type	Shut-Down, Re-power on to recover
EAN-13	
Code	5213009761932
General	
Vibration	B :10 ~ 500Hz, G 10min./1cycle, period for 60min. lank 2 each along X, Y, Z axes ST:10 ~ 500Hz, 5G 10min./1cycle, period for 60min. each along X, Y, Z axes
Safety standards	IEC62368-1, IEC60335-1, Dekra BS EN/EN60335-1, BS EN/EN62368-1, UL62368-1, TUV BS EN/EN62368-1, EAC TP TC 004 approved
Operating temperature	0 °C to 60 °C
Storage temperature	-10 °C to +70 °C
Humidity	Up to 90%
Dimensions	162 x 70 x 41mm
Mounting	Pro Line series
Weight	0.35 Kg

PRO LINE

LEMCO

www.lemco.gr

Lemco Europe

Lemco I.K.E.
Latheas 46, 13678, Acharnes,
Athens, Greece

TEL: +30 210 2811401, +30 210 2405237

E-MAIL: info@lemco.gr

LEMCO MEA

Lemco MiddleEast LLC
Office 109, Dubai Autism Center,
Garhoud, Dubai, United Arab Emirates

TEL: +971 48842230

E-MAIL: middleeast@lemco.gr