



Innovation for the Last Mile™

## Coaxial CATV Connectors Product Selection Guide

connectors

tools

bonding blocks

adapters

jumpers

kits

PCT International, Inc.  
EMEA Division



## contents

connectors	1
torque retaining	1
features and benefits	1
training & support	2
our commitment	2
ordering information	5
specifications	5
tools	4
product selection	4
accessories	5
bonding blocks	6
monolithic	6
platinum series	6
adapters	6
female to female splice	6
gold series	7
crimp connectors	7
adapters	7
jumpers	8
standard & custom assemblies	8
kits	9
custom self install kits	9

**Headquarters**  
PCT International, Inc.  
Mesa AZ USA

**Subscriber Cable Division**  
PCT International, Inc.  
Yantai, PRC Factory



For information, please visit [www.pctinternational.com/PCTEMEA](http://www.pctinternational.com/PCTEMEA).

© 2012-2013 PCT International, Inc. | PCTEMEA.CAT.CONN.201209  
Specifications subject to change without notice. 1PreP, DSM, PCT, PCT International,  
and Z-Wire are trademarks, registered and otherwise, of PCT International, Inc.

## torque retaining connectors

Building upon PCT International's field-proven TRS connector design, our patented torque retaining connector technology provides the premium reliability that the industry needs to harden the drop.

Field knowledge and extensive testing confirm that "F" connectors loosen over time. Even when properly wrench-tightened, exposure to vibration and temperature cycling will cause "F" connectors to loosen, increase signal ingress, increase signal egress, and allow moisture migration. Our innovative, torque retaining technology ensures that wrench or finger tightened connectors remain properly tightened to the F-female port, regardless of vibration or temperature cycling.

## features and benefits

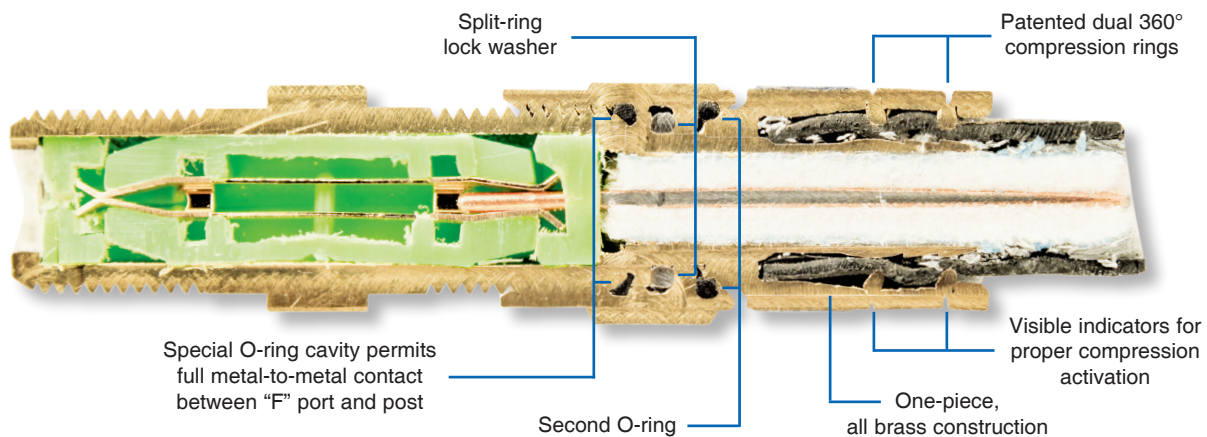
Lock washers are used in almost all applications that involve vibration, such as moving parts & engines, to ensure that the bolts holding the items together stay as tight as the day they were installed.



It was only logical that PCT incorporate such a simple idea into our connectors. This small addition corrects a complicated problem for operators who are experiencing problems with loose connections. The lock washer located beneath the post guarantees a secure, metal-to-metal connection between the F-male and F-female faces on the port ensuring a quality

connection every time. Our connectors can be repeatedly tightened and loosened without any loss of torque retaining ability, ensuring a long life span in the field or home.

In addition to the torque retaining features, PCT connectors also offer superior sealing protection through dual compression rings and dual O-rings. Our specially designed post allows the O-ring, located in the face of the connector, to seat inside a small chamber allowing a true metal-to-metal contact with both the post and the face of the port. Typical most moisture enters through the threads of a connector. Our dual O-ring design eliminates the need for an additional weather seal. PCT is one of the few manufactures that maintains a high pass rate on the



### PCT-TRS-6L Cutaway

(Shown installed onto PCT coaxial cable and connected to PCT-F81-G)

SCTE IPS moisture migration test without the use of weather boots during testing.

Contact PCT, and we'll help you harden the drop in your application.

## training and support

At PCT, the support doesn't end after the sale, we are here to assist you every step of the way! We are dedicated to our customers and

are committed to ongoing training and support. Our staff of industry experienced personnel is here to assist you every step of the way.

### individualized training

PCT strives to offer each customer a unique training experience that is designed with their needs in mind. Our technical support personnel offer onsite training and support to ensure



that everyone on your team understands and is confident in our products.

PCT's internally developed training programs allow our customers an opportunity to learn through hands-on exercises.

These exercises include the use of PCT products as well as their interoperability with other leading industry manufacturers' products.



Completion of the program assures that each customer of PCT is certified in the use of our products. Each training program is tailored to working with technicians and management at their facilities, to assist them with training on various products with an emphasis on proper preparation and

installation on both cable and connectors. Training sessions average around two (2) hours and accommodate up to 100 trainees per session. Installation and preparation techniques learned and practiced in these sessions assist our customers in reducing trouble calls and increasing subscriber satisfaction.

## our commitment to you

PCT is committed to continued excellence in customer service and stands behind each and every product we sell to our customers.



# compression connectors

## ordering information and specifications



Innovation for the Last Mile™

### ordering information

part number description

#### Series 6

PCT-ERS-6	Torque retaining, 60% thru quad-shield, ERS, 21 mm
PCT-ERS-6NT	Torque retaining, 60% thru quad-shield, ERS, 21 mm, nickel tin
PCT-TRS-6	60% thru quad-shield, TRS, 18 mm
PCT-TRS-6L	Torque retaining, 60% thru quad-shield, TRS, 18 mm
PCT-TRS-6LNT	Torque retaining, 60% thru quad-shield, TRS, 18 mm, nickel tin
PCT-TRSXL-6	60% thru quad-shield, TRS, XL 21 mm
PCT-TRSXL-6NT	60% thru quad-shield, TRS, XL 21 mm, nickel tin
PCT-TRSXL-6L	Torque retaining, 60% thru quad-shield, TRS, XL 21 mm
PCT-TRSXL-6LNT	Torque retaining, 60% thru quad-shield, TRS, XL 21 mm, nickel tin
PCT-TRS-6LRA	Torque retaining, 60% thru quad-shield, TRS, right angle
PCT-DRS-6-IF-NT	60% thru tri-shield, DRS, IEC female, nickel tin
PCT-DRS-6-IM-NT	60% thru tri-shield, DRS, IEC male, nickel tin
PCT-BNC-6	60% thru quad-shield, BNC male
PCT-RCA-6	60% thru quad-shield, RCA male

#### Series 9

PCT-ERS-9NT	Torque retaining, 60% thru quad-shield, ERS, 18 mm, nickel tin
PCT-TRS-9	60% thru quad-shield, TRS, 18 mm
PCT-TRS-9LNT	Torque retaining, 60% thru quad-shield, TRS, 18 mm, nickel tin
PCT-BNC-9	60% thru quad-shield, BNC male
PCT-RCA-9NT	60% thru quad-shield, RCA male, nickel tin

#### Series 11

PCT-TRS-11L	Torque retaining, 60% thru quad-shield (7/16 hex nut), sulfamate nickel plating
PCT-TRS-11LRA	Right angle, torque retaining, 60% thru quad-shield (7/16 Hex nut), sulfamate nickel plating
PCT-DRS-11L	Torque retaining, 60% thru quad-shield (7/16 hex nut), bright acid tin plating
PCT-DRS-11LB	Torque retaining, 60% thru quad-shield (9/16 hex nut), bright acid tin plating
PCT-DRS-11RANT	Right angle, torque retaining, 60% thru quad-shield (9/16 hex nut), nickel-tin, bright acid tin plating

#### Series 59

PCT-ERS-59	Torque retaining, 60% thru quad-shield, ERS, 21 mm
PCT-TRS-59	60% thru quad-shield, TRS, 18 mm
PCT-TRS-59L	Torque retaining, 60% thru quad-shield, TRS, 18 mm
PCT-DRS-59-IF-NT	IEC, 67% thru quad-shield, IEC female, nickel tin
PCT-DRS-59-IM-NT	IEC, 60% thru tri-shield, IEC male, nickel tin
PCT-BNC-59	60% thru quad-shield, BNC male
PCT-RCA-59	60% thru quad-shield, RCA male

### specifications

#### TRS & DRS Series 59 / 6 / 9 / 11

parameter	specification	requirement	results
Cable retention	ANSI SCTE 99 2004	> 40 lbs pull force	PASS
Chemical resistance	BLCR GR-1503-CORE 4.7	No cracking or swelling	PASS
Corrosion resistance	BLCR GR-1503-CORE 3.2.1	1,000 hours salt spray	PASS
Tightening torque	ANSI/SCTE 98 2004	Tightened to 60 in / lbs without damage	PASS
Insertion loss	ANSI/SCTE 144 2007	< 0.05 dB to 350 MHz, < 0.1 dB to 700 MHz, < 0.2 dB to 1 GHz	PASS
Installation force	ANSI/SCTE 73 2007	< 20 lbs maximum insertion	PASS
Loosening torque	BLCR GR-1503-CORE 4.2	≥ 30 in / lbs after temperature cycling	PASS
Moisture migration	ANSI/SCTE 60 2004	No dye penetration after 5 days of temperature cycling	PASS
Ozone degradation	BLCR GR-1503-CORE 4.1	70 hours exposure	PASS
Return loss	ANSI/SCTE 05 2008	> -30 dB to 1 GHz	PASS
Salt fog	ANSI/SCTE 143 2007	> -30 dB return loss to 1 GHz	PASS
Shielding effectiveness	ANSI/SCTE 48-1 2007 ANSI/SCTE 48-2 2008	> -100 dB to 300 MHz, > -90 dB to 1 GHz	PASS
Temperature cycling with humidity	BLCR GR-1503 4.1	> 40 lbs pull force after temperature cycling	PASS
UV degradation	BLCR GR-1503-CORE 4.8	UV resistant after 7 days	PASS
Vibration	BLCR GR-1503-CORE 4.6	> 32 in / lbs loosening torque after vibration	PASS
DC contact resistance outer conductor	ANSI/SCTE 103 2004	< 5 milliohms	PASS



PCT-TRS-6L



PCT-TRS-6



PCT-BNC-6



PCT-TRSXL-6L



PCT-DRS-59-IF-NT



PCT-TRSXL-9L-NT



PCT-DRS-59-IM-NT



PCT-TRS-11L

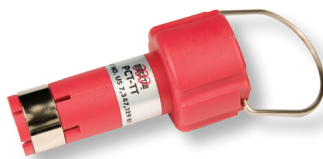
For information, please visit [www.pctinternational.com/PCTEMEA](http://www.pctinternational.com/PCTEMEA).

© 2012-2013 PCT International, Inc. | PCTEMEA.CAT.CONN.201209  
Specifications subject to change without notice. 1PreP, DSM, PCT, PCT International, and Z-Wire are trademarks, registered and otherwise, of PCT International, Inc.

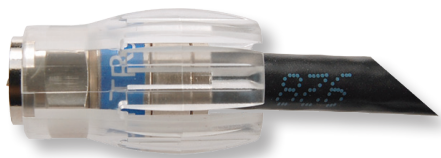




features and benefits	PCT-ECN-CT	PCT-BTN-CT-AS	PCT-AIO-CT	PCT-RH-CT-AS	PCT-TRS-CT-AS
Cable types	Series 6 & 59		Series 6, 59, 11		
Connector types	TRS / DRS Series 6, 59		TRS/ DRS Series 6, 59, 11, BNC, IEC, RCA	TRS / DRS Series 6, 59, 11	TRS Series 6, 59, 11
Works on all connector types	--		✓	--	
Compact, pocket-size design	✓	✓	✓	✓	✓
Enhanced leverage for easier activation	✓	✓	✓	✓	✓
Automatically aligns cable	--	--	--	✓	--
Flip latch secures connector assembly providing perfect alignment	--	✓		--	✓
Greater durability for longer life	✓	✓	✓	✓	✓
Full 360° compression surface	✓	✓	✓	✓	✓



features and benefits	PCT-TT	PCT-IT	
Indoor torque tool	✓	Insertion tool	✓
Tightens F-connectors to 8 to 10 in lbs of torque	✓	Used to help install a connector onto difficult cable	✓
Consistent torque applied, regardless of the installer	✓	Compact, pocket-size design with key ring slot	✓
Eliminates damage to consumer electronic devices due to overtightened connectors	✓	Quad and tri-shield cable gauges (max. diameter over jacket)	✓
Reusable, glass filled nylon material "work hardens" with use	✓	Center conductor length gauge	✓
Prevents truck rolls caused by loose connectors	✓		
Helps prevent signal loss, ingress / egress	✓		
Great for "Self Install Kits"!	✓		



PCT-JS  
(Shown installed onto a PCT-JTRS6LA jumper.)



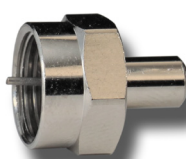
PCT-JSU  
(Works on various connector lengths.)



PCT-TS  
(Shown installed onto a PCT-JTRS6LA jumper.)



PCT-59-FT



PCT-SR



PCT-LT



PCT-TPGR



PCT-90F

## ordering information

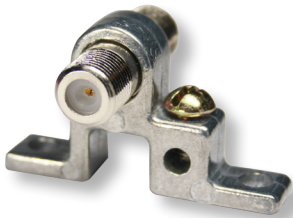
part number	description
PCT-90F	90° right angle adapter
PCT-JS	Jumper sleeve, for TRS series connectors, 18 mm
PCT-JSU	Jumper sleeve, universal, for 18 mm/ 19 mm series connectors
PCT-SR	Seal ring, EPDM, rubber
PCT-SS	Security sleeve
PCT-59-FT	Terminator, F port
PCT-LT	Terminator, locking, 100% brass, with 75 Ohm resistor
PCT-TPGO	Terminator, locking port, without resistor
PCT-TPGR	Terminator, locking port, with 75 Ohm resistor

### bonding blocks

monolithic & gold series



PCT-MBB-1



PCT-GB-1P

#### features and benefits

	PCT-MBB-1	PCT-GB-1P
One-piece design constructed of stainless steel for extended life and added value	✓	--
Gold plated beryllium copper seizure	✓	✓
100% conformance to SCTE standards for center conductor retention	✓	✓
PCT's patented WEDGE™ mechanism secures the ground wire with more than triple the surface area of contact without damaging the copper bond wire	✓	--
Integrated split-ring lock washer permanently bonds wire attachment	✓	--
High quality, corrosion resistant extruded aluminum alloy	--	✓
Includes grounding wire screw and two mounting screws	✓	✓
PCT's patented DSM seizure for superior center conductor retention, reduced common path distortion, and excellent electrical performance (including min. -30 dB return loss thru 1 GHz)	✓	✓
Precision machined SCTE conforming ports for superior F-connector performance	✓	✓

#### ordering information

part number	description
PCT-MBB-1	Bonding Block, Monolithic with DSM® Seizure and Wedge™ Design
PCT-GB-1P	Bonding Block, Platinum Series with DSM® Seizure

### adapters

female to female splice



PCT-F81-G



PCT-81-F-SPG & PCT-81-F-NWG

#### features and benefits

	PCT-F81-G	PCT-81-F-SPG & PCT-81-F-NWG
3/8 in. - 32 UNEF thread with 7/16 in. nut	✓	✓
Gold Series includes patented DSM seizure for superior center conductor retention, reduced common path distortion, and excellent electrical performance	✓	✓
Minimum return loss: -30 dB thru 1 GHz	✓	✓
Maximum insertion loss: -0.05 dB thru 1 GHz	✓	✓
Precision machined port ends for superior mating performance of F-connectors	✓	✓
Precision machined SCTE conforming ports for superior F-connector performance	✓	✓

#### ordering information

part number	description
PCT-81-F-SPG	"F" female splice adapter, gold series, 21.5 mm w/o nut and washer
PCT-81-F-NWG	"F" female splice adapter, gold series, 26.5 mm with nut and washer
PCT-F81-G	"F" female splice adapter, gold series, 30.9 mm w/o nut and washer, double flat-ended, indoor/outdoor use, wide hex flat area



# gold series crimp connectors adapters



Innovation for the Last Mile™

## crimp connectors

### features and benefits

#### Hex Crimp F-S & U Series

- ✓ SCTE Specifications compliant
- ✓ Weather-seal includes o-ring and silicone gel
- ✓ 'F' Series crimped at 0.324 for Standard Shield cable
- ✓ 'U' Series crimped at 0.360 for Standard Tri & Quad Shield cable
- ✓ Attached crimp ring provides electrical shielding and mechanical retention
- ✓ Annealed crimp ring for reliable crimp with no fracturing
- ✓ Made of machined brass with bright acid tin plating for corrosion resistance
- ✓ Wide hex nut for ease of tightening
- ✓ CE Certified

#### Hex Crimp F-S & F-Q Series

- ✓ SCTE compliant
- ✓ Attached crimp ring provides electrical shielding and mechanical retention
- ✓ 'F-S' series with annealed crimp ring for reliable crimp with no fracturing
- ✓ 'F-Q' series with smooth crimp ring for reliable crimp with no fracturing
- ✓ Machined brass construction with tin plating
- ✓ Attached center conductor prevents damage to 'F' female
- ✓ 'F-S' series crimped at 0.470 for Standard Shield cable
- ✓ 'F-Q' series crimped at 0.470 for Tri & Quad Shield cable

#### IEC Series

- ✓ Attached crimp ring provides electrical shielding and mechanical retention
- ✓ Made of machined brass with bright acid tin plating for corrosion resistance
- ✓ Annealed crimp ring for reliable crimp with no fracturing
- ✓ CE Certified

### ordering information

part number description

#### Series 6

PCT-6-F-S	Connector, hex crimp, standard shield, RG-6, "F" type
PCT-6-F-S-WS	Connector, hex crimp, standard shield, RG-6, "F" type, weather sealed
PCT-6-U	Connector, hex crimp, standard / tri / quad-shield, RG-6, "F" type
PCT-6-U-W-S	Connector, hex crimp, standard / tri / quad-shield, RG-6, "F" type, weather sealed
PCT-6-I-F	Connector, standard shield, RG-6, IEC female
PCT-6-I-M	Connector, standard shield, RG-6, IEC male

#### Series 11

PCT-11-F-S	Connector, hex crimp, standard shield, RG-11, attached pin, "F" type
PCT-11-F-Q	Connector, hex crimp, tri / quad-shield, RG-11, attached pin, "F" type

#### Series 59

PCT-59-F-S	Connector, hex crimp, standard shield, RG-59, "F" type
PCT-59-U	Connector, hex crimp, standard / tri / quad-shield, RG-59, "F" type



## adapters

### ordering information

part number description

#### F-Type Adapters

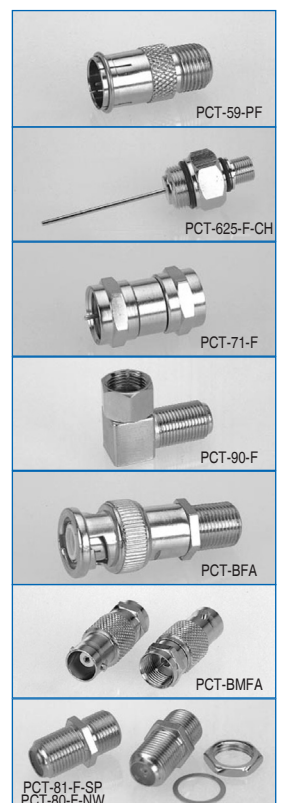
PCT-59-PF	'F' male to 'F' female quick adapter
PCT-625-F-CH	'F' female to KS adapter
PCT-625-F-CHG	'F' female to KS adapter – guaranteed 30 dB return loss
PCT-71-F	'F' male to 'F' male adapter
PCT-90-F	'F' male to 'F' female right angle adapter
PCT-BFA	BNC male to 'F' female adapter
PCT-BFMA	BNC male to 'F' male adapter
PCT-11-B	RG-11 feed thru connector, standard / tri- / quad-shield

#### Splice Adapters, Female to Female, Standard Series

PCT-81-F-SP	26.5 mm (length) w/o nut and washer
PCT-81-F-NW	26.5 mm (length) with nut and washer
PCT-81L-F-SP	28 mm (length), w/o nut and washer
PCT-81L-F-NW	28 mm (length) with nut and washer

#### Splice Adapters, Female to Female, Gold Series

✓	Minimum return loss: -40 dB at 5MHz ~ 1GHz
✓	Maximum insertion loss: -0.05 dB at 5MHz ~ 1GHz
PCT-81-F-SPG	26.5 mm (length) w/o nut and washer
PCT-81-F-NWG	26.5 mm (length) with nut and washer



For information, please visit [www.pctinternational.com/PCTEMEA](http://www.pctinternational.com/PCTEMEA).

© 2012-2013 PCT International, Inc. | PCTEMEA.CAT.CONN.201209  
Specifications subject to change without notice. 1PreP, DSM, PCT, PCT International, and Z-Wire are trademarks, registered and otherwise, of PCT International, Inc.



# jumpers

## standard and custom assemblies



Innovation for the Last Mile™



### jumper assemblies

custom and standard



PCT Custom Jumper  
(Shown with PCT-TRS-6L Connectors  
and PCT-JS Jumper Sleeves.)

You name it,  
PCT can build it.

### Realize significant cost savings and installation efficiencies

#### end-to-end manufacturing

- ✓ Engineered for advanced two-way broadband networks requiring high performance levels, ensuring quality of service and customer satisfaction
- ✓ Coaxial cable, connectors, sleeves, and assemblies are all manufactured by PCT
- ✓ Meet stringent US and international standards, including SCTE
- ✓ Approved by cable and satellite operators
- ✓ Material price advantage passed on to our customers
- ✓ 24/7 manufacturing in PCT factories using PCT proprietary automated jumper equipment

#### options include PCT manufactured products

- ✓ Coaxial cable - with a variety of shielding, jacket color, and technology (like Z-Wire® and 1PreP®) options
- ✓ Connectors - choose from a variety of series options that include continuous ground and locking
- ✓ Connector sleeves - assorted model options
- ✓ Lengths - get exactly the lengths you need
- ✓ Packaging - bundled, coiled, bagged, and other options

#### ordering guide (choose 1 from each column)

JTRS	A				description
<b>connector options</b>					
	6				PCT-6
	6L				PCT-6L
	11				PCT-11
	11L				PCT-11L
	59				PCT-59
	59L				PCT-59L
<b>cable shielding</b>					
					standard (leave blank)
		TS			tri-shield (tape, braid, tape)
		77TS			tri-shield, 77% braid coverage (tape, braid, tape)
		QS			quad-shield (tape, braid, tape, braid)
<b>length</b>					
			xx		enter number of mm (xx)
<b>options</b>					
				JS	jumper sleeve for TRS series connectors*
				JSU	universal sleeve for TRS/DRS series connectors*

\* JS and JSU sleeves can be added to any jumper.  
For assistance in determining the correct part number, please feel free to contact PCT (see back page for contact details).

#### ordering information

PCT builds to suit your needs! Whether straight from our factory or multiple domestic warehouses, PCT's production and logistics efficiencies are passed on to you. Our customer service team is ready to work with you for the best possible configurations.

As always, PCT manufactures best in class products, employs stringent quality processes, and continues its on-going commitment to you that we stand behind every product we make for trusted, long term performance.

For information, please visit [www.pctinternational.com/PCTEMEA](http://www.pctinternational.com/PCTEMEA).

© 2012-2013 PCT International, Inc. | PCTEMEA.CAT.CONN.201209  
Specifications subject to change without notice. 1PreP, DSM, PCT, PCT International, and Z-Wire are trademarks, registered and otherwise, of PCT International, Inc.



**custom self install kits**

**Save big with PCT kits and get them your way**

**end-to-end manufacturing**

- ✓ Each PCT jumper kit is specially designed to meet your exact, individual cable system needs
- ✓ All subscriber connectivity installation components are packaged in one handy kit
- ✓ Each kit is shrink wrapped or bagged
- ✓ Material price advantage is passed onto our customers
- ✓ 24/7 USA manufacturing

**options include PCT manufactured products**

- ✓ Coaxial cable jumpers
- ✓ Cat5e cable
- ✓ Phone cable
- ✓ USB cable
- ✓ Locking connectors
- ✓ IEC connectors
- ✓ Connector sleeves
- ✓ Digital splitters

**ordering information**

- PCT-DPK Self Install Kit, Digital Phone
- PCT-HSDK Self Install Kit, High Speed Data
- PCT-TVK Self Install Kit, Standard Digital HD / HD DVR



PCT Custom Self Install Kits

(Kittable items include: Jumpers with Connectors and Sleeves, Splitters, Amplifiers, USB Cables, Phone Cables, etc.)

For information, please visit [www.pctinternational.com/PCTEMEA](http://www.pctinternational.com/PCTEMEA).

© 2012-2013 PCT International, Inc. | PCTEMEA.CAT.CONN.201209  
Specifications subject to change without notice. 1PreP, DSM, PCT, PCT International, and Z-Wire are trademarks, registered and otherwise, of PCT International, Inc.



Innovation for the Last Mile™

**PCT INTERNATIONAL, INC.**

**Corporate Headquarters**

2260 West Broadway Road  
Mesa AZ 85202-1898  
USA  
Tel +1.480.813.0925  
Fax +1.480.545.1080

Customer Service  
Tel +1.480.240.2193  
infoemea@pctintl.com

**EUROPE/MIDDLE EAST/AFRICA/RUSSIA CIS**

**PCT EMEA**

Fetih Mah. Libadiye Cd. Tahralli Sk.  
Kavakyeli Plaza C Blok K1 D3  
34704 Goztepe Atasehir Istanbul  
TURKEY  
Tel +90 216 317 9986  
Fax +90 216 317 9962  
mehmet.bayrak@pctintl.com

**CHINA**

**PCT International (YANTAI)**

No. 1 Andrew Avenue  
Muping Economic Development Zone  
Yantai 264118  
CHINA  
Tel +86.535.471.0500  
Fax +86.535.471.0530  
infoasia@pctusa.net

**PCT's GLOBAL SUPPLY CHAIN PARTNER  
Communications Test Design, Inc. (CTDI)**

Tel 00.1.610.793.8661  
pctsales@ctdi.com

For a complete list of distributors, please visit:  
[pctinternational.com/emea](http://pctinternational.com/emea)

[For information, please visit www.pctinternational.com/emea.](http://www.pctinternational.com/emea)

© 2012-2013 PCT International, Inc. | PCTEMEA.CAT.CONN.201209  
Specifications subject to change without notice. 1PreP, DSM, PCT, PCT International,  
and Z-Wire are trademarks, registered and otherwise, of PCT International, Inc.